

PG611 A00

12GB GDDR5X, 384b, 256Mx32

TALL DVI-D + DP + DP + HDMI/DP + DP

TABLE OF CONTENTS

Page	Description
1	Table of Contents
2	BLOCK DIAGRAM
3	PCI EXPRESS
4	MEMORY: GPU PARTITION A/B
5	MEMORY: FBA PARTITION[31:0]
6	MEMORY: FBA PARTITION[63:32]
7	MEMORY: FBB PARTITION[31:0]
8	MEMORY: FBB PARTITION[63:31]
9	MEMORY: GPU PARTITION C/D
10	MEMORY: FBC PARTITION[31:0]
11	MEMORY: FBC PARTITION[63:32]
12	MEMORY: FBD PARTITION[31:0]
13	MEMORY: FBD PARTITION[63:32]
14	MEMORY: GPU PARTITION E/F
15	MEMORY: FBE PARTITION[31:0]
16	MEMORY: FBE PARTITION[63:32]
17	MEMORY: FBF PARTITION[31:0]
18	MEMORY: FBF PARTITION[63:32]
19	GPU PWR AND GND
20	GPU DECOUPLING
21	IFPAB DVI-D-DL
22	IFPE DP
23	IFPF DP
24	IFPC HDMI/DP
25	IFPD DP

Page	Description
26	MIOA/B INTERFACE & FRAME LOCK
27	MISC: FAN, THERMAL, JTAG, GPIO, STEREO
28	MISC: ROM, STRAPS
29	MISC: XTAL, PLL
30	PS: 5V, PEXVDD
31	PS: 1V8 Rails
32	PS: FBVDDQ
33	PS: NVVDD Controller_OVR8
34	PS: NVVDD Controller_PWR-MODULE
35	PS: NVVDD Phase 1, 2
36	PS: NVVDD Phase 3, 4
37	PS: NVVDD Phase 5
38	PS: NVVDD Phase 6, 7
39	PS: Dynamic power balance phase
40	PS: Dynamic power balance logic
41	PS: Input, filtering, and Monitoring
42	PS: Current Sterring, Hot Unplug
43	PS: NVVDD ENABLE
44	PS: GC6 MISC
45	GEFORCE LED AND SLI LED
46	PS: NV3V3, NV12V
47	PS: MCU
48	MECH
49	VR Thermal Protection

GIGABYTE™

TABLE OF CONTENTS

Size	Document Number	Rev
Custom	GV-N108TAORUS-11GD	1.02
Date:	Wednesday, August 09, 2017	Sheet 1 of 37

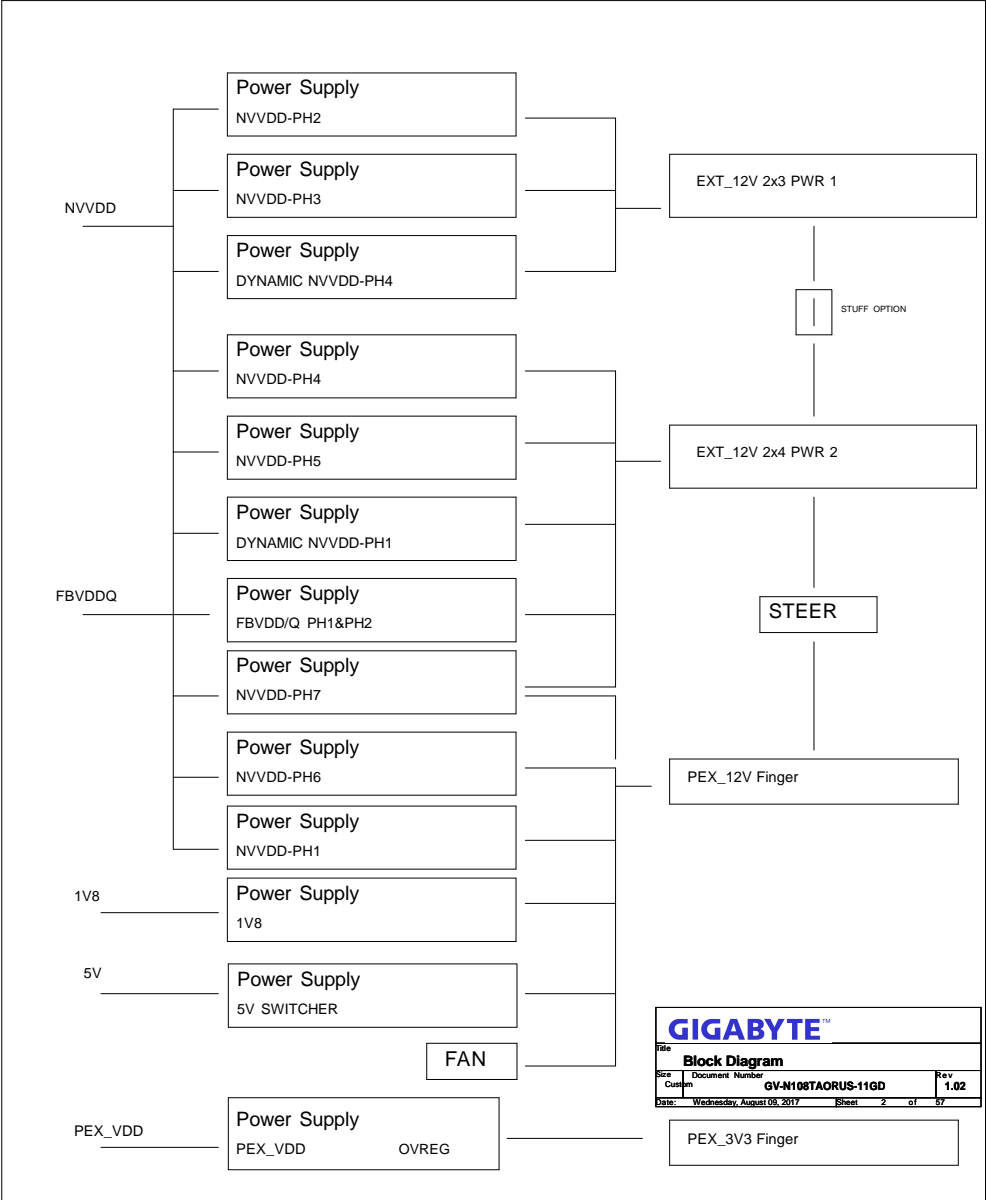
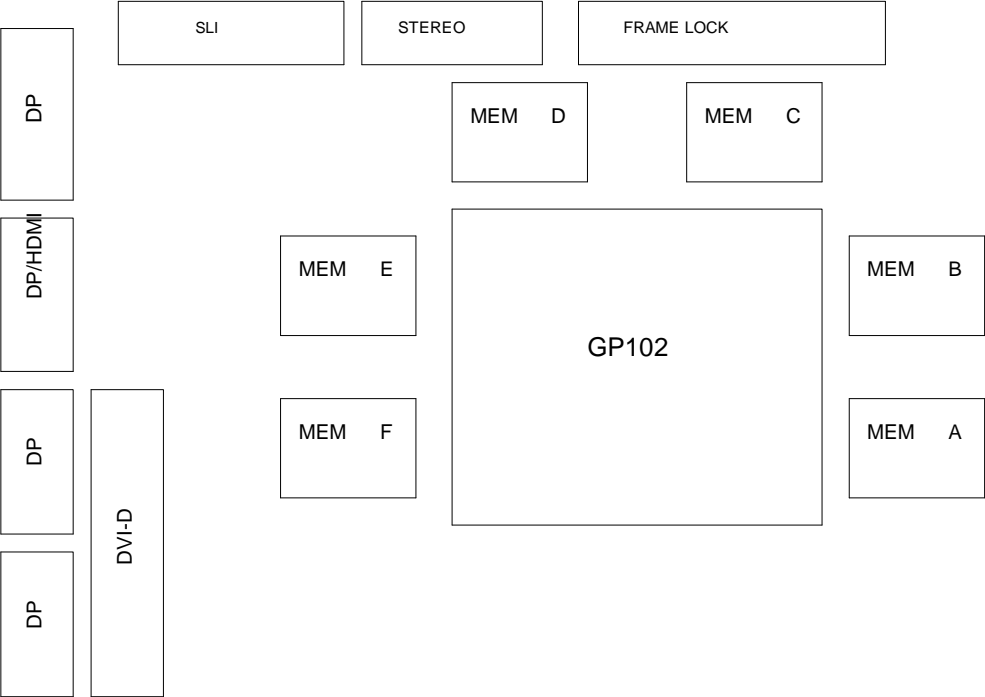
NVIDIA CORPORATION

2701 SAN TOMAS EXPRESSWAY  
SANTA CLARA, CA 95050, USA



NV_PN	600-1G611-BASE-000		
PCB REV	PG611-A00	PAGE	1 OF 49
SCM REV	A	DATE	09-MAR-2016

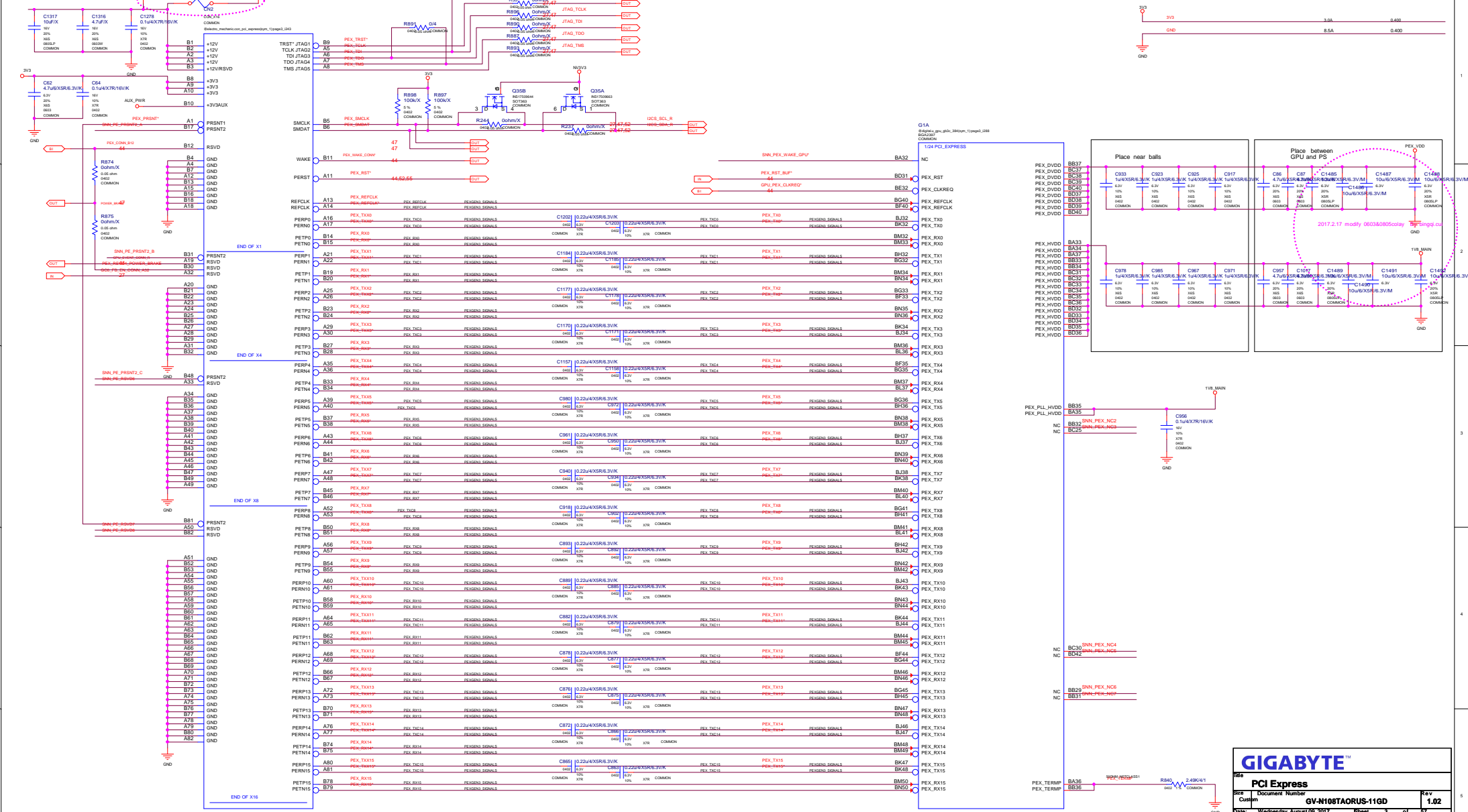
ALL NVIDIA DESIGN SPECIFICATIONS, REFERENCE SPECIFICATIONS, REFERENCE BOARDS, FILES, DRAWINGS, DIAGNOSTICS, LISTS AND OTHER DOCUMENTS (TOGETHER AND SEPARATELY, MATERIALS) ARE BEING PROVIDED "AS IS". THE MATERIALS MAY CONTAIN KNOWN AND UNKNOWN VIOLATIONS OR DEVIATIONS OF INDUSTRY STANDARDS AND SPECIFICATIONS. NVIDIA MAKES NO WARRANTIES, EXPRESSED, IMPLIED, STATUTORY OR OTHERWISE WITH RESPECT TO THE MATERIALS AND EXPRESSLY DISCLAIMS ALL IMPLIED WARRANTIES INCLUDING, WITHOUT LIMITATION, THE WARRANTIES OF DESIGN, OF NONINFRINGEMENT, MERCHANTABILITY OR FITNESS FOR A PARTICULAR PURPOSE, OR ARISING FROM A COURSE OF DEALING, TRADE USAGE, TRADE PRACTICE, OR INDUSTRY STANDARDS.

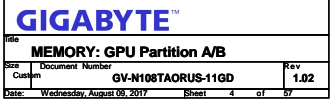


**GIGABYTE™**

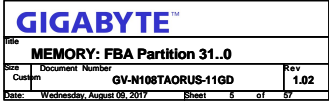
File			
Block Diagram			
Size	Document Number	Rev	
Content	GV-M108TAORUS-11GD	1.02	
Date	Wednesday, August 03, 2017	Sheet	2 of 37





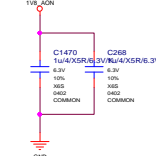
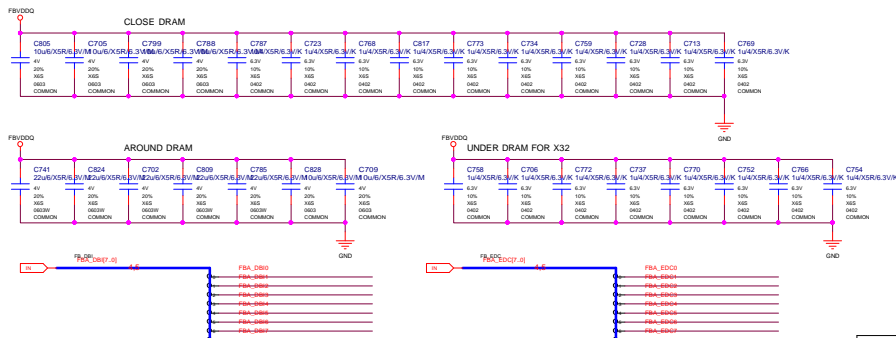
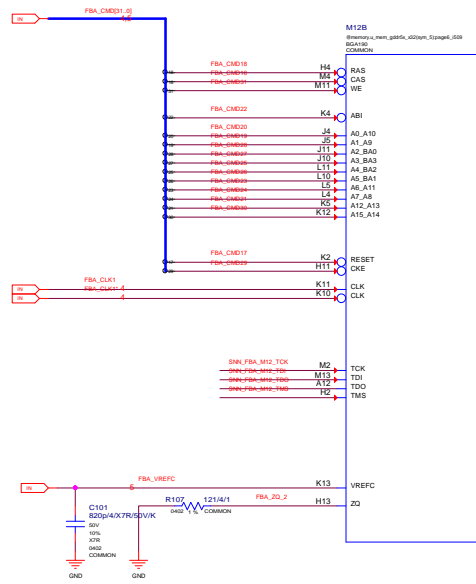


NV_PN	600-1G611-BASE-000		
PCB REV	PG611-A00	PAGE	4 OF 49
BOM REV	A	DATE	09-MAR-2016



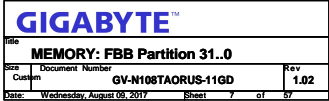
2701 SAN TOMAS EXPRESSWAY  
SANTA CLARA, CA 95050, USA

NV_PN	600-1G611-BASE-000		
PCB REV	PG611-A00	PAGE	5 OF 49
BOM REV	A	DATE	09-MAR-2016



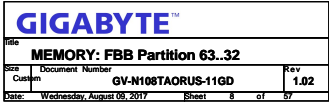
**NVIDIA CORPORATION**  
2701 SAN TOMAS EXPRESSWAY  
SANTA CLARA, CA 95050, USA

PCB REV	PG811-A00	PAGE	8 OF 4
BOM REV	A	DATE	09-MAR-2016



2701 SAN TOMAS EXPRESSWAY  
SANTA CLARA, CA 95050, USA

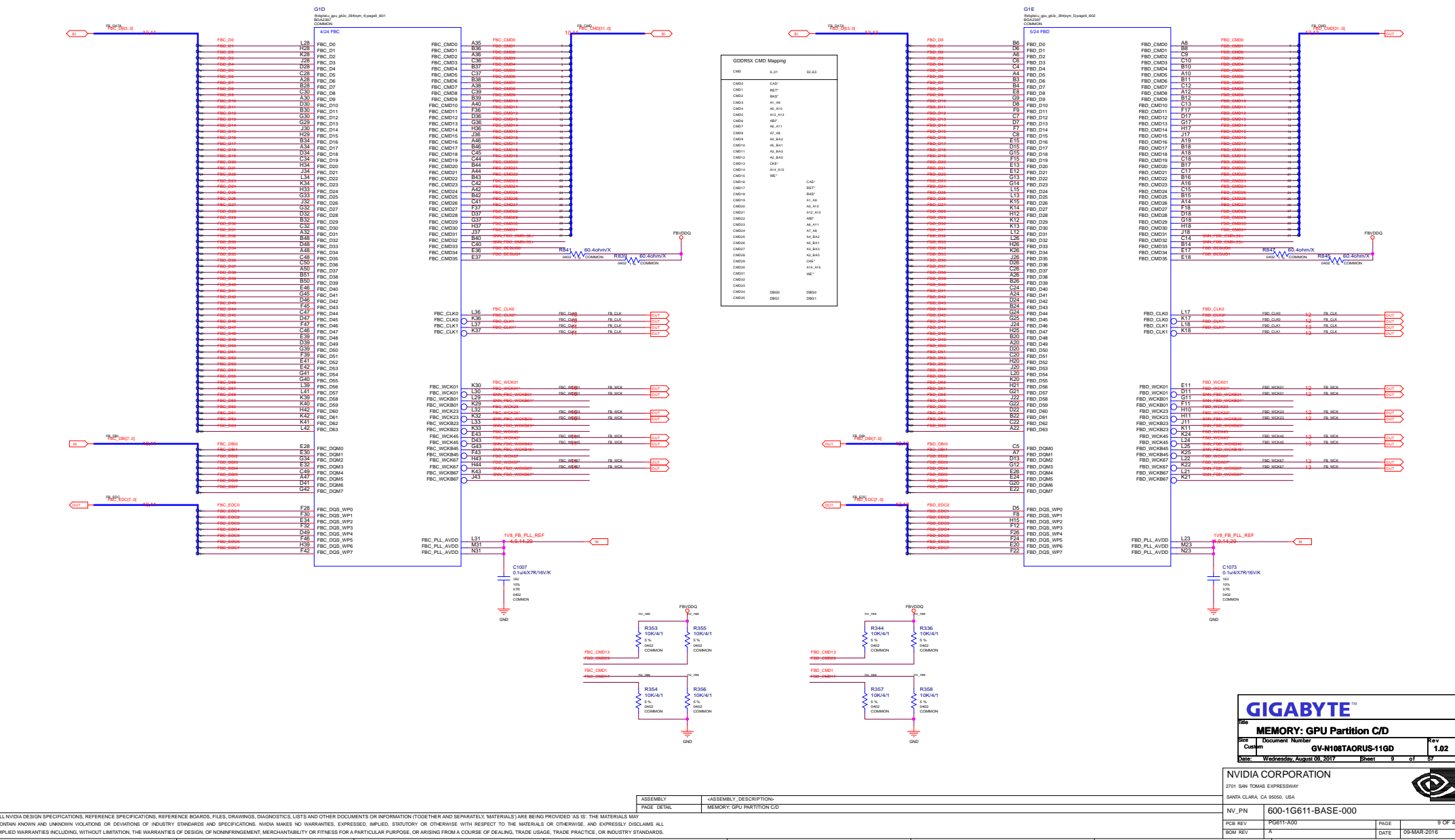
NV_PN	600-1G611-BASE-000		
PCB REV	PG611-A00	PAGE	7 OF 49
BOM REV	A	DATE	09-MAR-2016

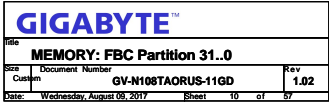


2701 SAN TOMAS EXPRESSWAY  
SANTA CLARA, CA 95050, USA

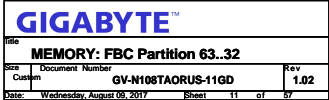
NV_PN	600-1G611-BASE-000		
PCB REV	PG611-A00	PAGE	8 OF 49
BOM REV	A	DATE	09-MAR-2016





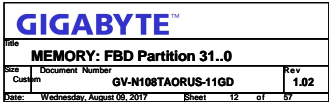


PCB REV	PG611-A00	PAGE	10 OF 49
BOM REV	A	DATE	09-MAR-2016



2701 SAN TOMAS EXPRESSWAY  
SANTA CLARA, CA 95050, USA

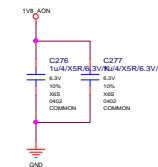
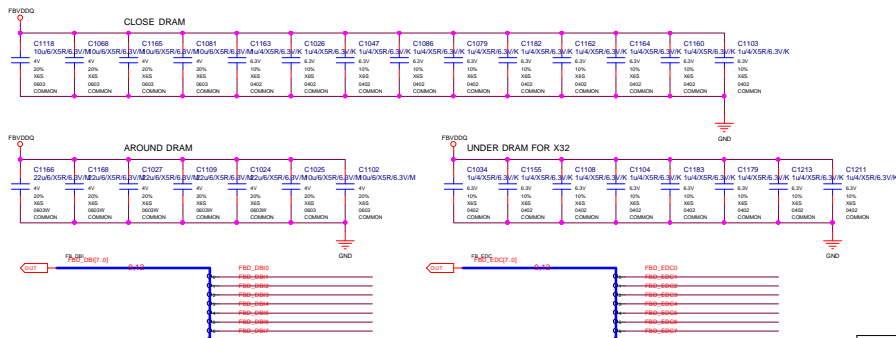
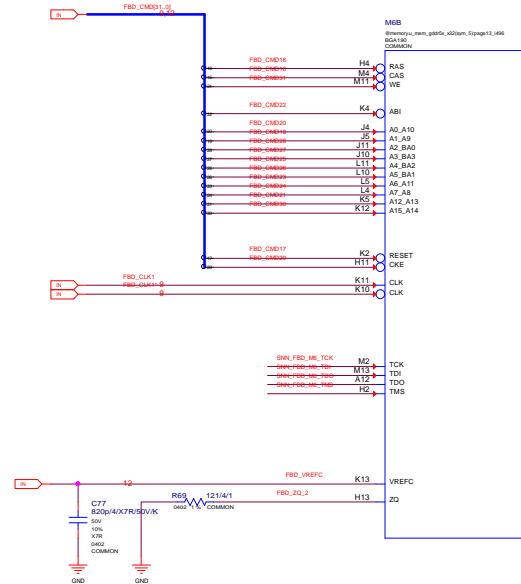
NV_PN	600-1G611-BASE-000		
PCB REV	PG611-A00	PAGE	11 OF 49
BOM REV	A	DATE	09-MAR-2016



2701 SAN TOMAS EXPRESSWAY  
SANTA CLARA, CA 95050, USA



NV_PN	600-1G611-BASE-000		
PCB REV	PG611-A00	PAGE	12 OF 49
BOM REV	A	DATE	09-MAR-2016



<b>GIGABYTE™</b>			
Title: <b>MEMORY: FBD Partition 63..32</b>			
Size	Document Number	Rev	
Custom	<b>GV-N108TAORUS-11GD</b>	<b>1.02</b>	
Date:	Wednesday, August 08, 2017	Sheet	13 of 57

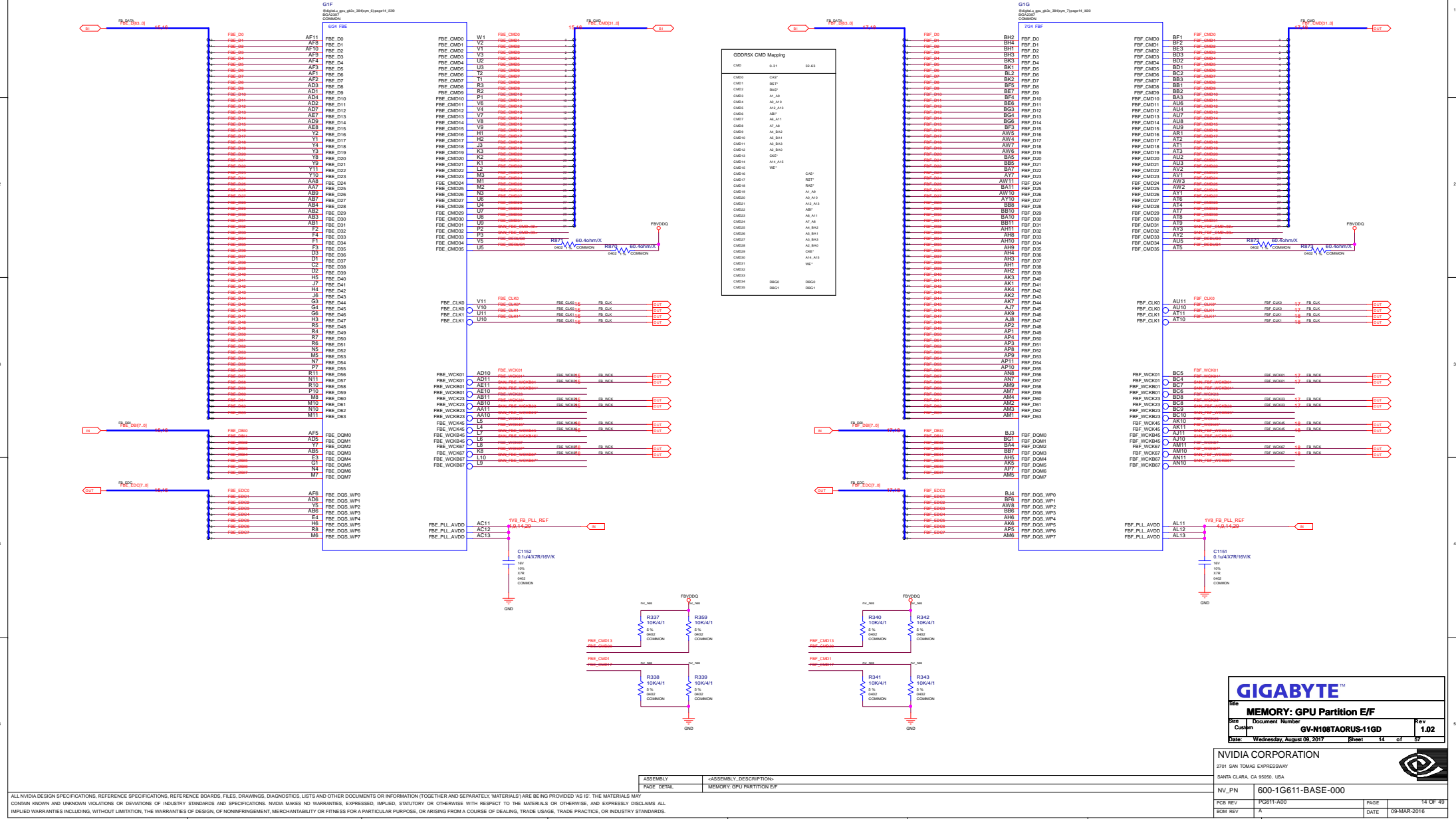
NVIDIA CORPORATION

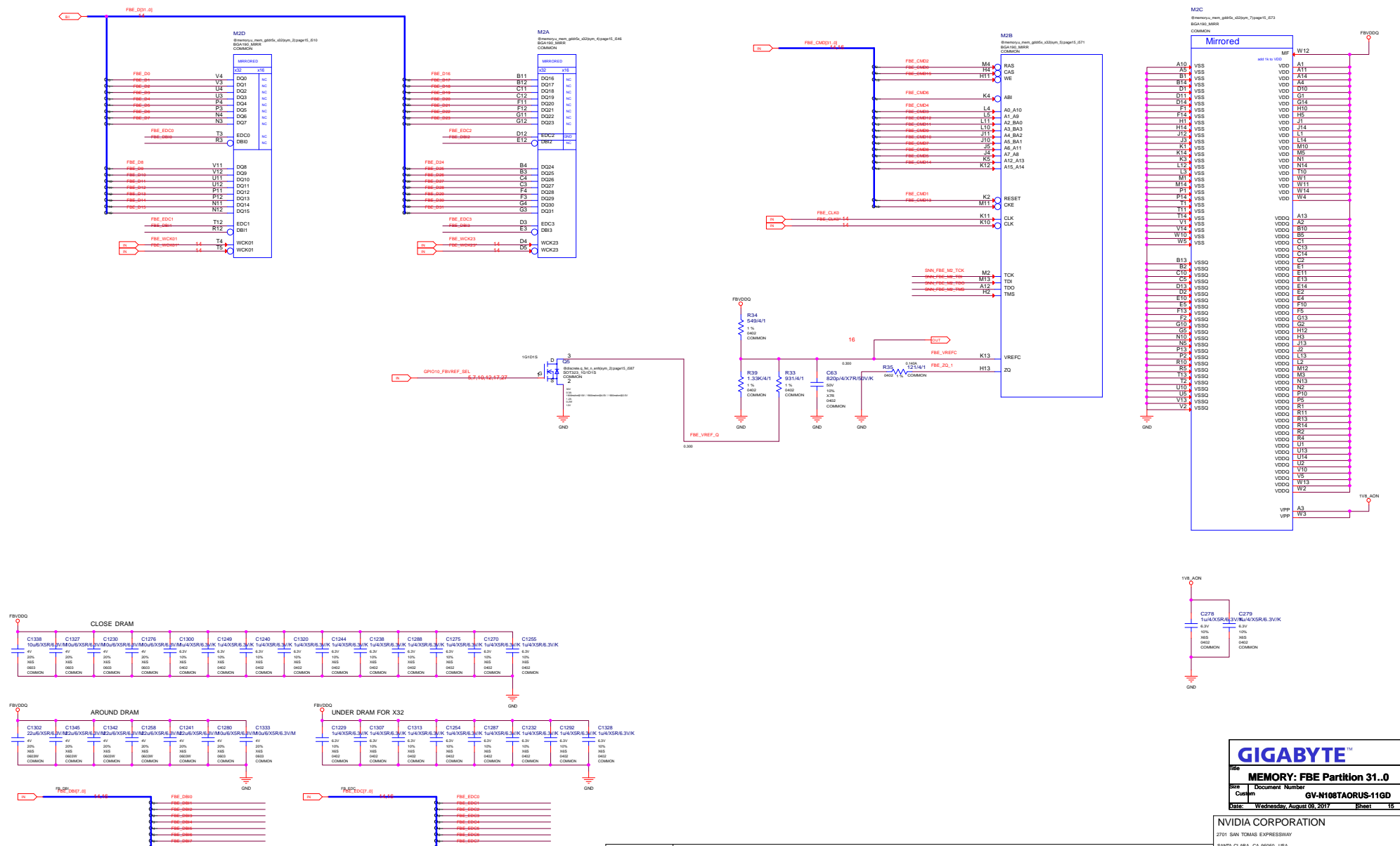
2701 SAN TOMAS EXPRESSWAY	
SANTA CLARA, CA 95050, USA	
NV_PN	600-1G611-BASE-000

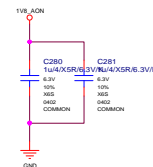
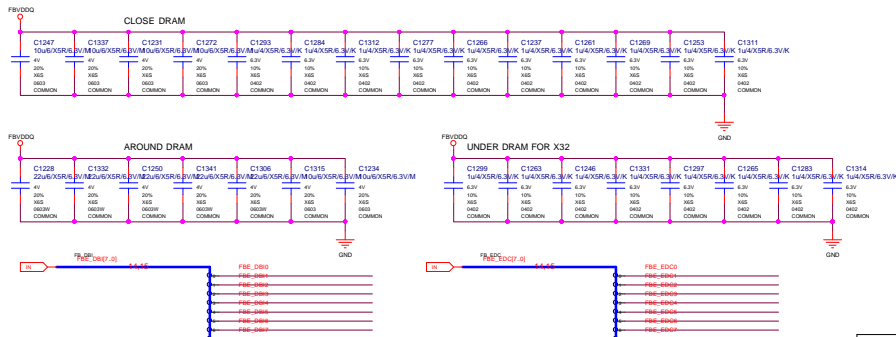
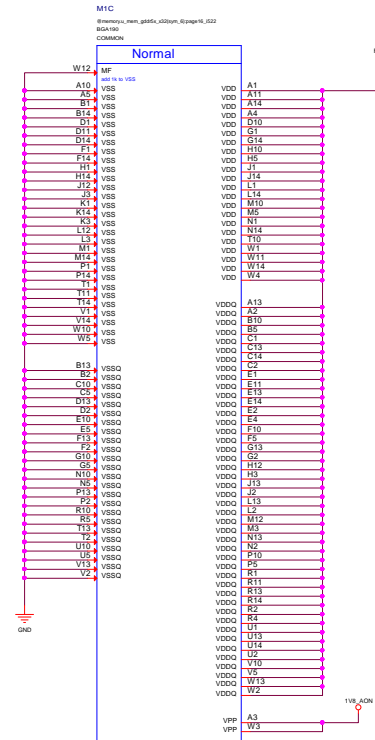



ASSEMBLY	<ASSEMBLY_DESCRIPTION>
PAGE DETAIL	MEMORY: FBD PARTITION(63-32)

PCB REV	PG611-A00	PAGE	13 OF 49
BOM REV	A	DATE	09-MAR-2016







			
<b>MEMORY: FBE Partition 63..32</b>			
Size	Document Number	Rev	
Custom	<b>GV-N108TAORUS-11GD</b>	<b>1.02</b>	
Date:	Wednesday, August 09, 2017	Sheet	16 of 57

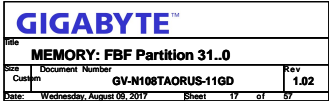
NVIDIA CORPORATION



NV_PN	600-1G611-BASE-000
-------	--------------------

PCB REV	PG611-A00	PAGE	16 OF 49
BOM REV	A	DATE	09-MAR-2016






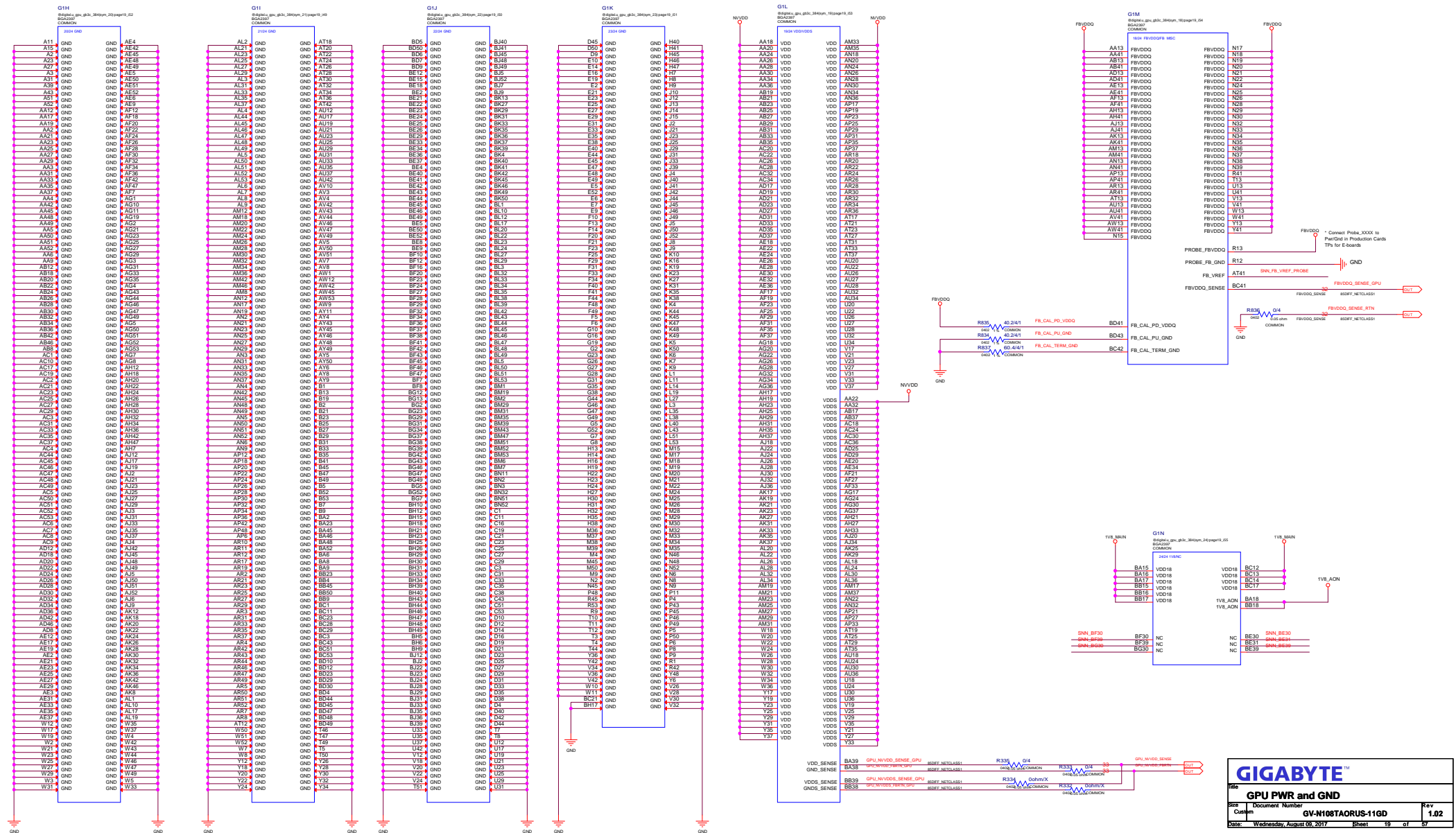
2701 SAN TOMAS EXPRESSWAY  
SANTA CLARA, CA 95050, USA

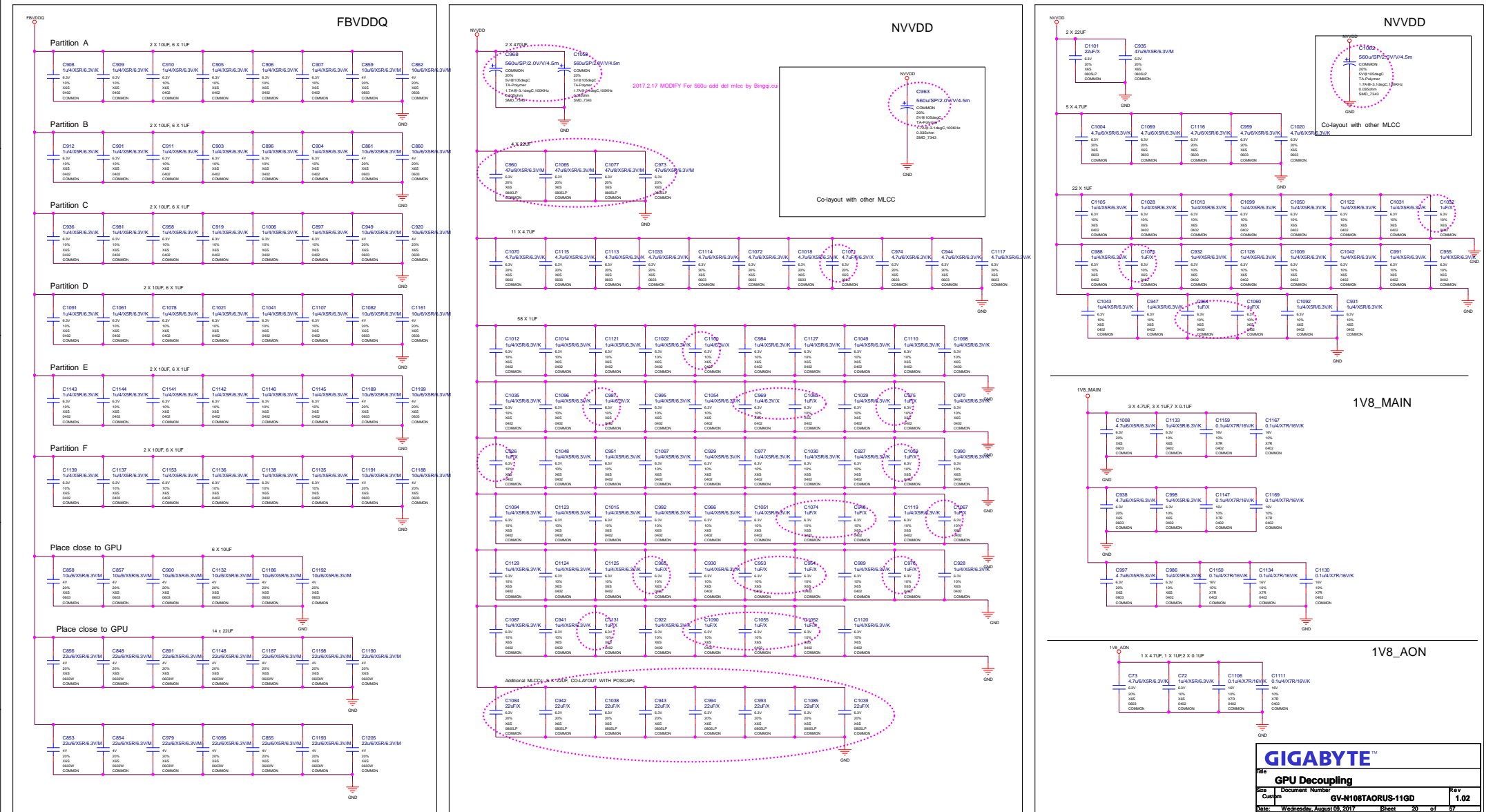
NV_PN	600-1G611-BASE-000		
PCB REV	PG611-A00	PAGE	17 OF 49
BOM REV	A	DATE	08-MAR-2016



NVIDIA CORPORATION			
2701 SAN TOMAS EXPRESSWAY			
SANTA CLARA, CA 95050, USA			
NV_PN	600-1G611-BASE-000		
PCB REV	PG611-A00	PAGE	18 OF 4
BOM REV	A	DATE	09-MAR-2016



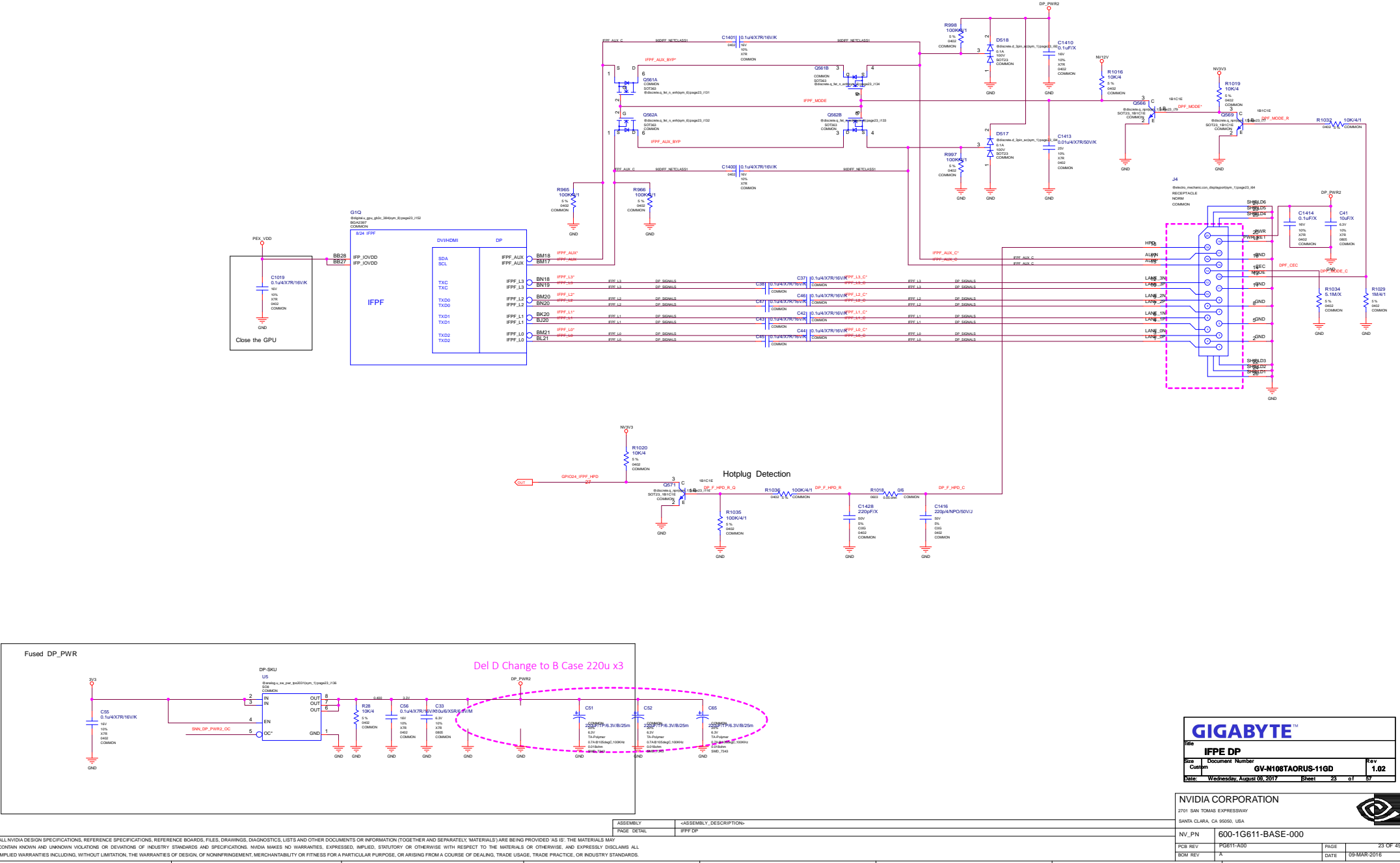






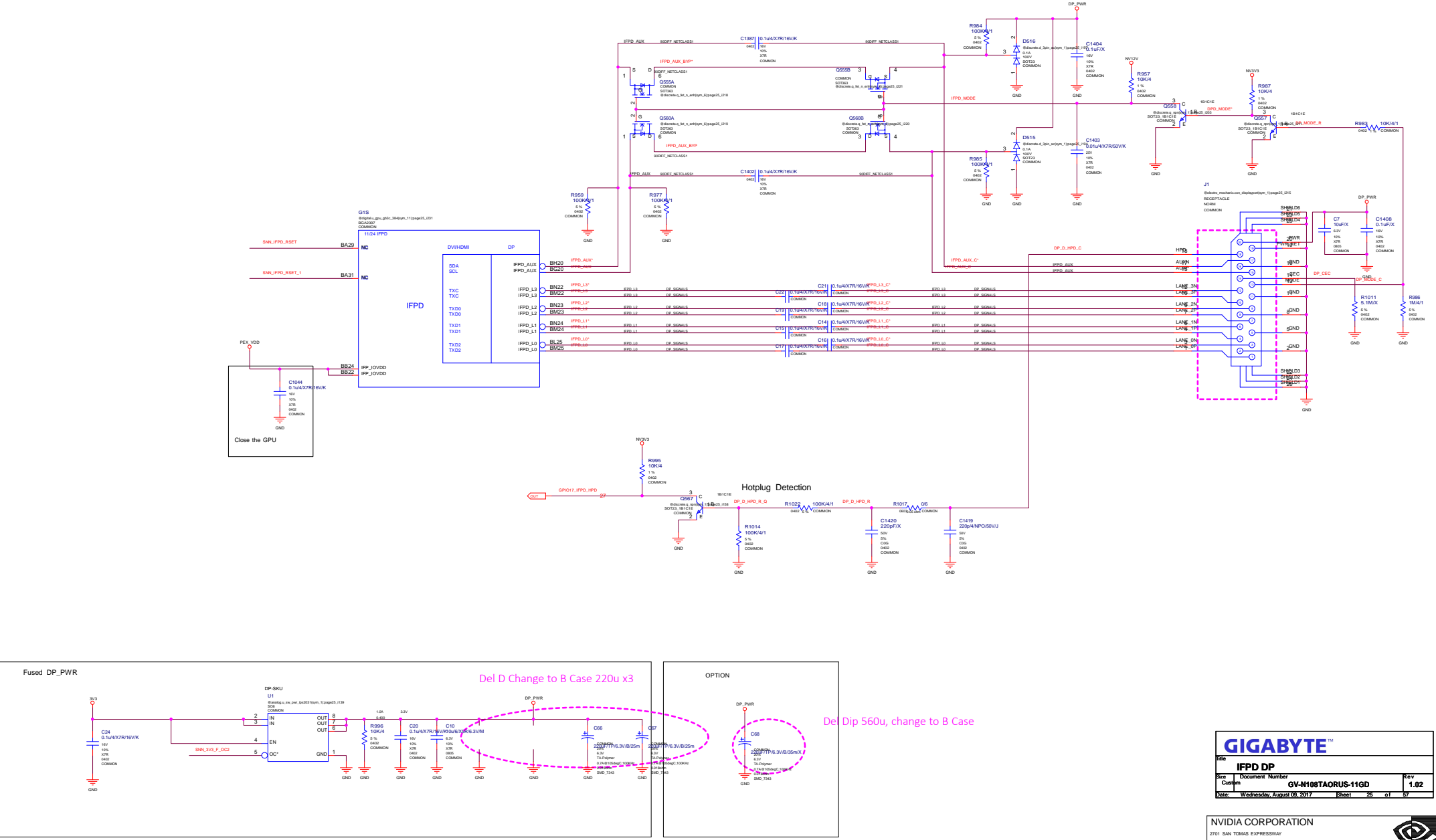


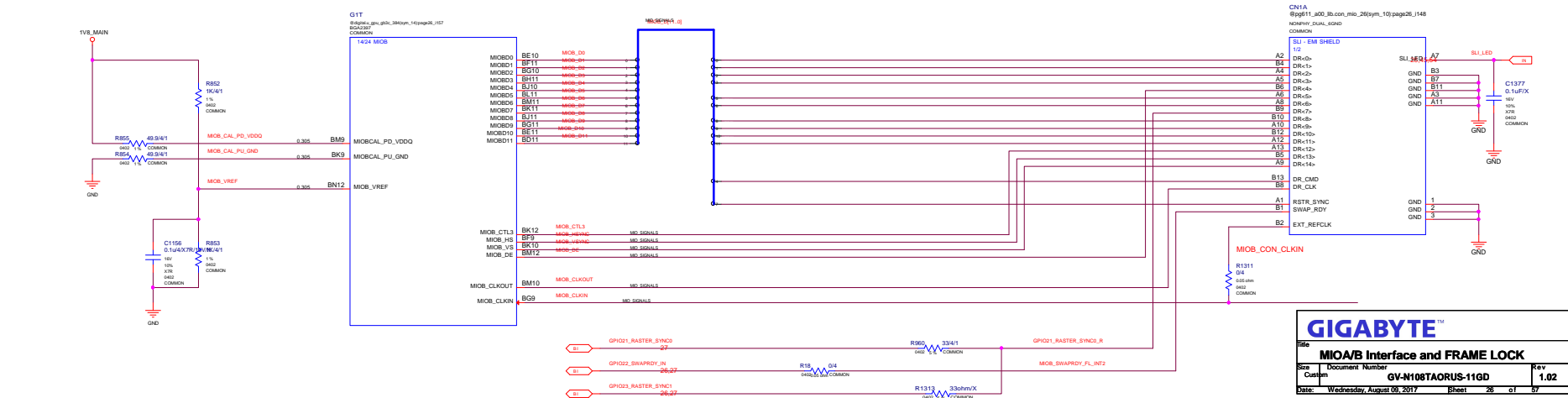
NV_PN	600-1G611-BASE-000		
PCB REV	PG611-A00	PAGE	22 Of 22
BOM REV	A	DATE	09-MAR-2016









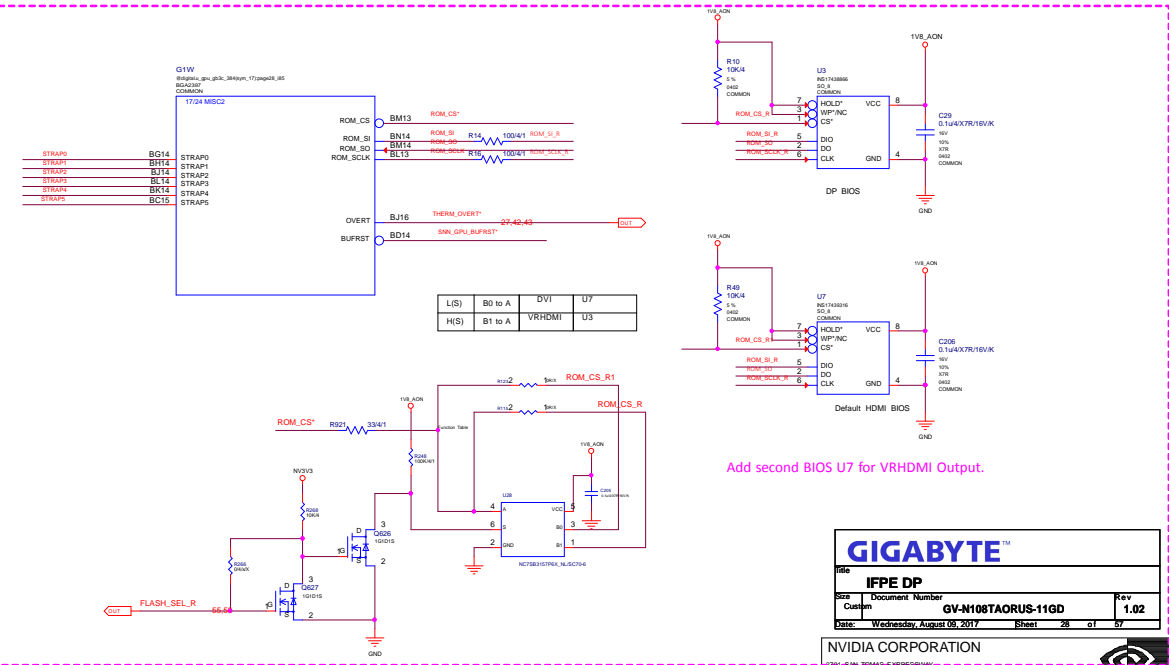


ASSEMBLY	<ASSEMBLY_DESCRIPTION>
PAGE DETAIL	MIOA/B INTERFACE & FRAME LOCK



STRAP5	STRAP4	STRAP3	SMB_ALT_ADDR	DEVID_SEL	PCIE_CFG	VGA_DEVICE
M	H	H	1	1	1	1
M	H	L	1	1	1	0
M	L	H	1	1	0	1
M	L	L	1	1	0	0
L	H	M	1	0	1	1
L	M	H	1	0	1	0
L	M	L	1	0	0	1
L	L	M	1	0	0	0
H	H	H	0	1	1	1
H	H	L	0	1	1	0
H	L	H	0	1	0	1
H	L	L	0	1	0	0
L	H	H	0	0	1	1
L	H	L	0	0	1	0
L	L	H	0	0	0	1 DEFAULT
L	L	L	0	0	0	0

1:SMB_ALT_ADDR ENABLE	1:PCIE_CFG LOW POWER
0:SMB_ALT_ADDR DISABLE	0:PCIE_CFG HIGH POWER
1:DEVID_SEL REBRAND	1:VGA_DEVICE ENABLE
0:DEVID_SEL ORIGNAL	0:VGA_DEVICE DISABLE





ASSEMBLY	<ASSEMBLY_DESCRIPTION>
PAGE DETAIL	MISC: XTAL, PLL

ASSEMBLY	<ASSEMBLY_DESCRIPTION>
PAGE DETAIL	PS: SV, PEXVDO



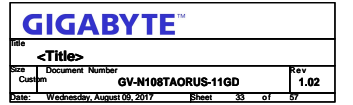
			
Title			
IFPE DP			
Size	Document Number		Rev
Custom	GV-N108TAORUS-11GD		1.02
Date:	Wednesday, August 09, 2017	Sheet 30 of 57	

PCB REV	PG611-A00	PAGE	30 OF 49
BOM REV	A	DATE	09-MAR-2016









NV_PN	600-1G413-BASE-000		
PCB REV	1G413-A00	PAGE	27 OF 38
BOM REV	A	DATE	29-MAR-2016

Del PWM MODULE

CO-LAYOUT: CHOOSE ONE ONLY

Del P-Board CAP

File

IFPE DP

Size

Custom

Document Number

GV-M108TAORUS-11GD

Date

Wednesday, August 09, 2017

Sheet

34 of 57

Rev

1.02

NVIDIA CORPORATION

2701 SAN TOMAS EXPRESSWAY

SANTA CLARA, CA 95050, USA

NV\_IN

600-1G611-BASE-000

PCB REV

PG611-A00

SCM REV

A

PAGE

34 OF 48

DATE

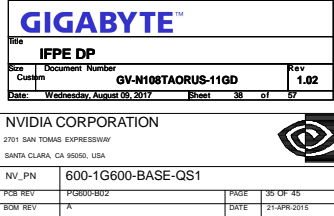
09-MAR-2016

ALL NVIDIA DESIGN SPECIFICATIONS, REFERENCE SPECIFICATIONS, REFERENCE BOARDS, FILES, DRAWINGS, DIAGNOSTICS, LISTS AND OTHER DOCUMENTS OR INFORMATION (TOGETHER AND SEPARATELY, MATERIALS) ARE BEING PROVIDED AS IS. THE MATERIALS MAY CONTAIN KNOWN AND UNKNOWN VIOLATIONS OR DEVIATIONS OF INDUSTRY STANDARDS AND SPECIFICATIONS. NVIDIA MAKES NO WARRANTIES, EXPRESSED, IMPLIED, STATUTORY OR OTHERWISE WITH RESPECT TO THE MATERIALS OR OTHERWISE, AND EXPRESSLY DISCLAIMS ALL IMPLIED WARRANTIES INCLUDING, WITHOUT LIMITATION, THE WARRANTIES OF DESIGN, OF NON-INFRINGEMENT, MERCHANTABILITY OR FITNESS FOR A PARTICULAR PURPOSE, OR ARISING FROM A COURSE OF DEALING, TRADE USAGE, TRADE PRACTICE, OR INDUSTRY STANDARDS.









ASSEMBLY	BASE LEVEL GENERIC SCHEMATIC ONLY
PAGE DETAIL	PS: NVDO Dynamic Switch Phases

ALL NVIDIA DESIGN SPECIFICATIONS, REFERENCE SPECIFICATIONS, REFERENCE BOARDS, FILES, DRAWINGS, DIAGNOSTICS, LISTS AND OTHER DOCUMENTS OR INFORMATION (TOGETHER AND SEPARATELY, MATERIALS) ARE BEING PROVIDED AS IS. THE MATERIALS MAY CONTAIN KNOWN AND UNKNOWN VULNERABILITIES OR DEVIATIONS OF INDUSTRY STANDARDS AND SPECIFICATIONS. NVIDIA MAKES NO WARRANTIES, EXPRESSED, IMPLIED, STATUTORY OR OTHERWISE WITH RESPECT TO THE MATERIALS OR OTHERWISE, AND EXPRESSLY DISCLAIMS ALL IMPLIED WARRANTIES INCLUDING, WITHOUT LIMITATION, THE WARRANTIES OF DESIGN, OF NON-INFRINGEMENT, MERCHANTABILITY OR FITNESS FOR A PARTICULAR PURPOSE, OR ARISING FROM A COURSE OF DEALING, TRADE USAGE, TRADE PRACTICE, OR INDUSTRY STANDARDS.

Delete

GIGABYTE™

Title <b>IFPE DP</b>		
Size Custom	Document Number <b>GV-M106TAORUS-11GD</b>	Rev <b>1.02</b>
Date Wednesday, August 09, 2017	Sheet 39	of 57

NVIDIA CORPORATION  
2701 SAN TOMAS EXPRESSWAY  
SANTA CLARA, CA 95050, USA



NV_PN	600-1G611-BASE-000		
PCB REV	PG611-A00	PAGE	39 OF 49
SCM REV	A	DATE	09-MAR-2016

ALL NVIDIA DESIGN SPECIFICATIONS, REFERENCE SPECIFICATIONS, REFERENCE BOARDS, FILES, DRAWINGS, DIAGNOSTICS, LISTS AND OTHER DOCUMENTS OR INFORMATION (TOGETHER AND SEPARATELY, MATERIALS) ARE BEING PROVIDED "AS IS". THE MATERIALS MAY CONTAIN KNOWN AND UNKNOWN VIOLATIONS OR DEVIATIONS OF INDUSTRY STANDARDS AND SPECIFICATIONS. NVIDIA MAKES NO WARRANTIES, EXPRESSED, IMPLIED, STATUTORY OR OTHERWISE WITH RESPECT TO THE MATERIALS OR OTHERWISE, AND EXPRESSLY DISCLAIMS ALL IMPLIED WARRANTIES INCLUDING, WITHOUT LIMITATION, THE WARRANTIES OF DESIGN, OF NON-INFRINGEMENT, MERCHANTABILITY OR FITNESS FOR A PARTICULAR PURPOSE, OR ARISING FROM A COURSE OF DEALING, TRADE USAGE, TRADE PRACTICE, OR INDUSTRY STANDARDS.

ASSEMBLY	<ASSEMBLY DESCRIPTION>
PAGE: DETAIL	PS: Dynamic power balance phase

Delete

GIGABYTE™

Title		
IFPE DP		
Size	Document Number	Rev
Custom	GV-N108TAORUS-11GD	1.02
Date	Wednesday, August 09, 2017	Sheet 40 of 47

NVIDIA CORPORATION  
2701 SAN TOMAS EXPRESSWAY  
SANTA CLARA, CA 95050, USA

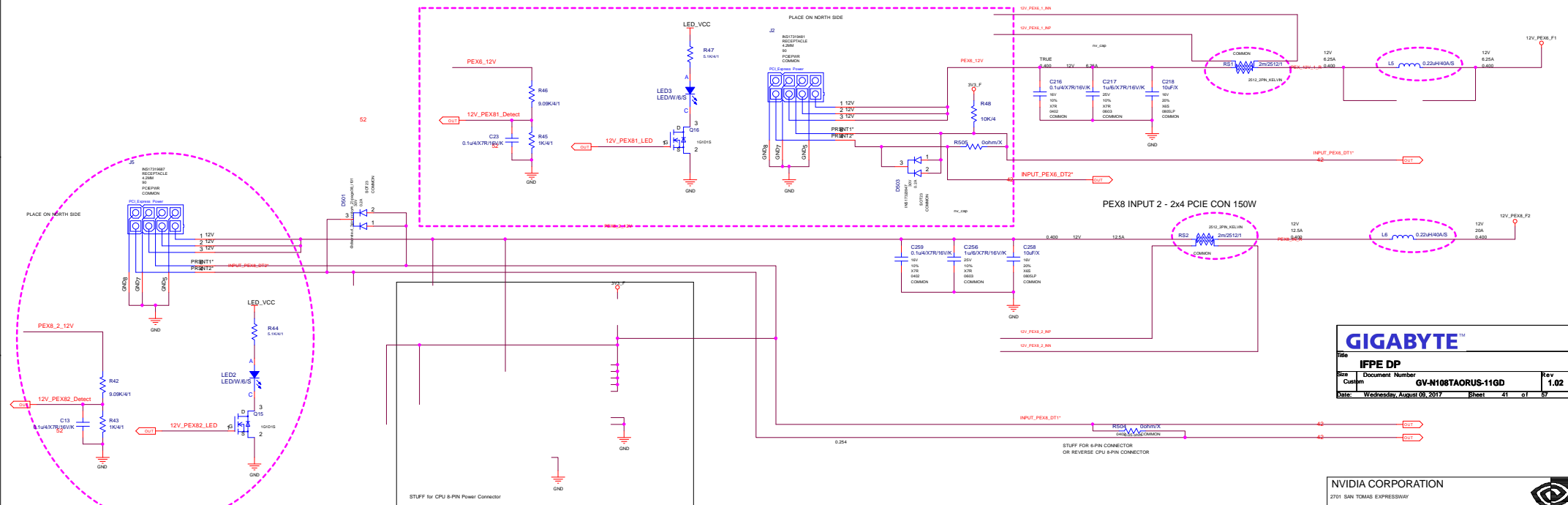
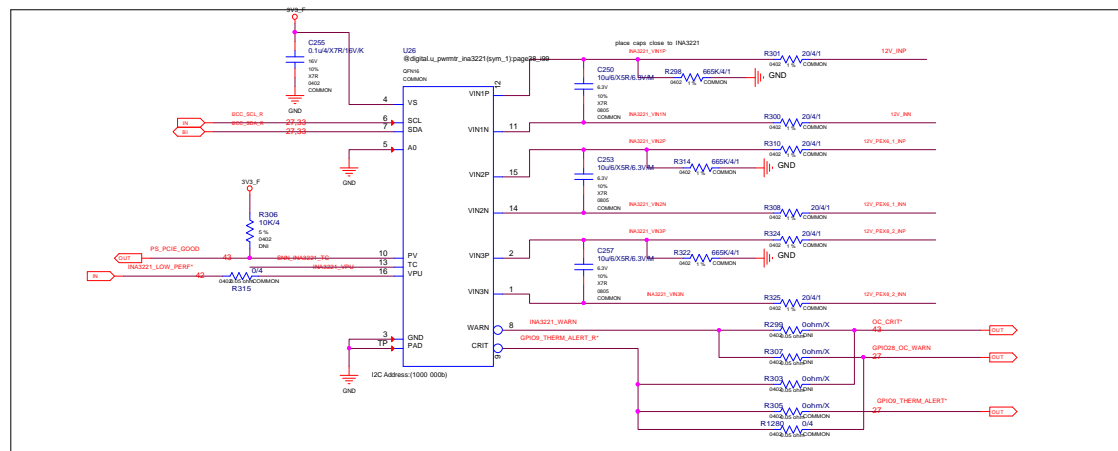


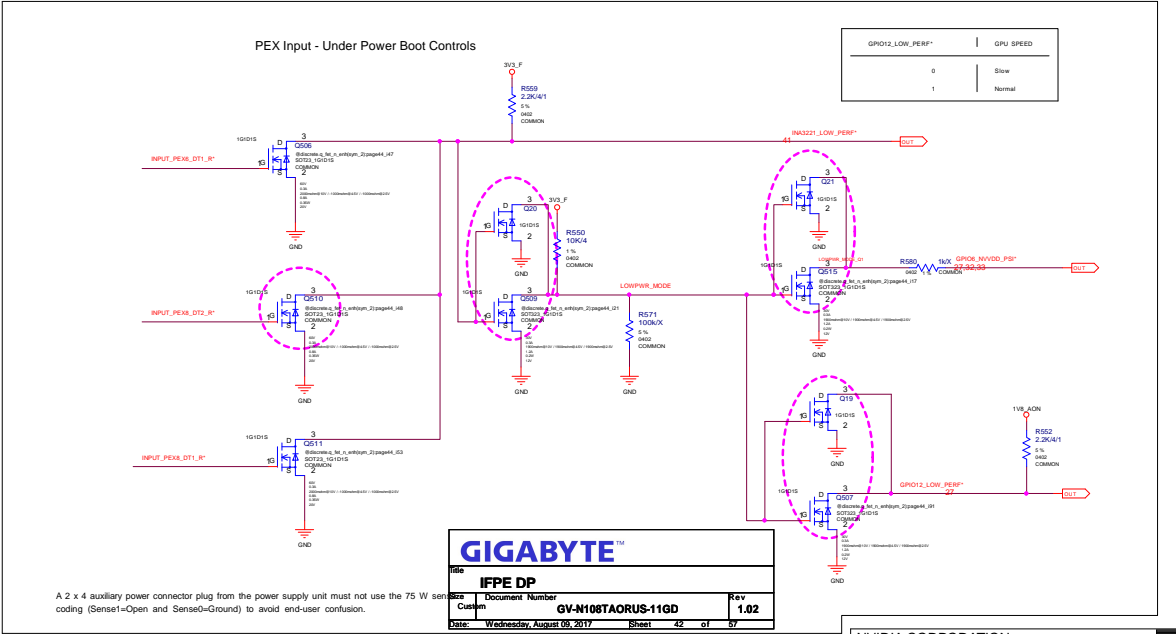
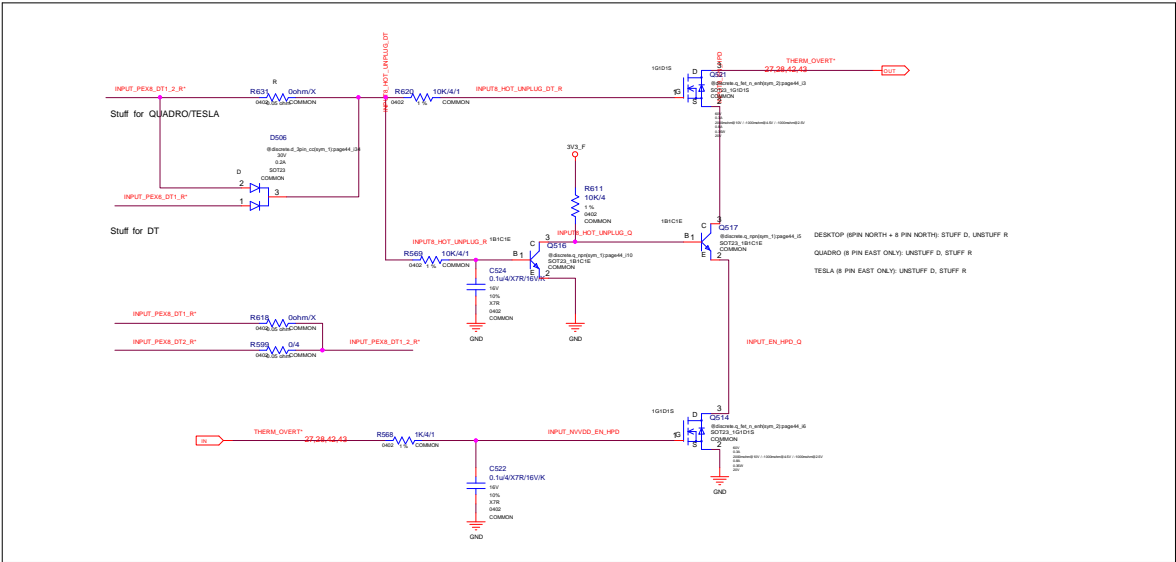
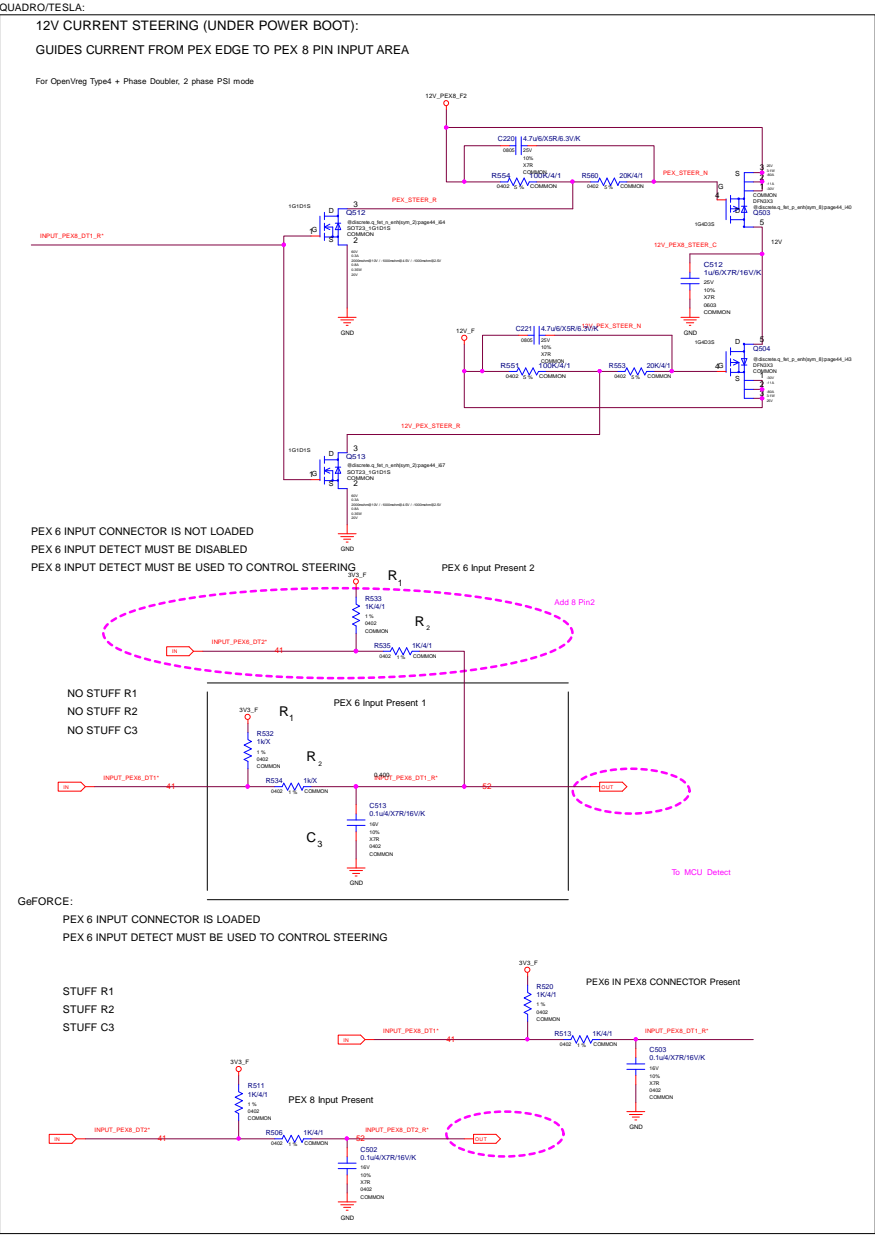
NV_PN	600-1G611-BASE-000		
PCB REV	PG611-A00	PAGE	30 OF 49
SCM REV	A	DATE	09-MAR-2016

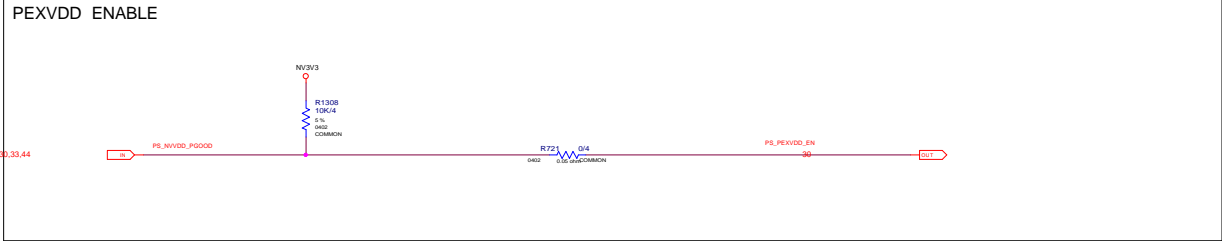
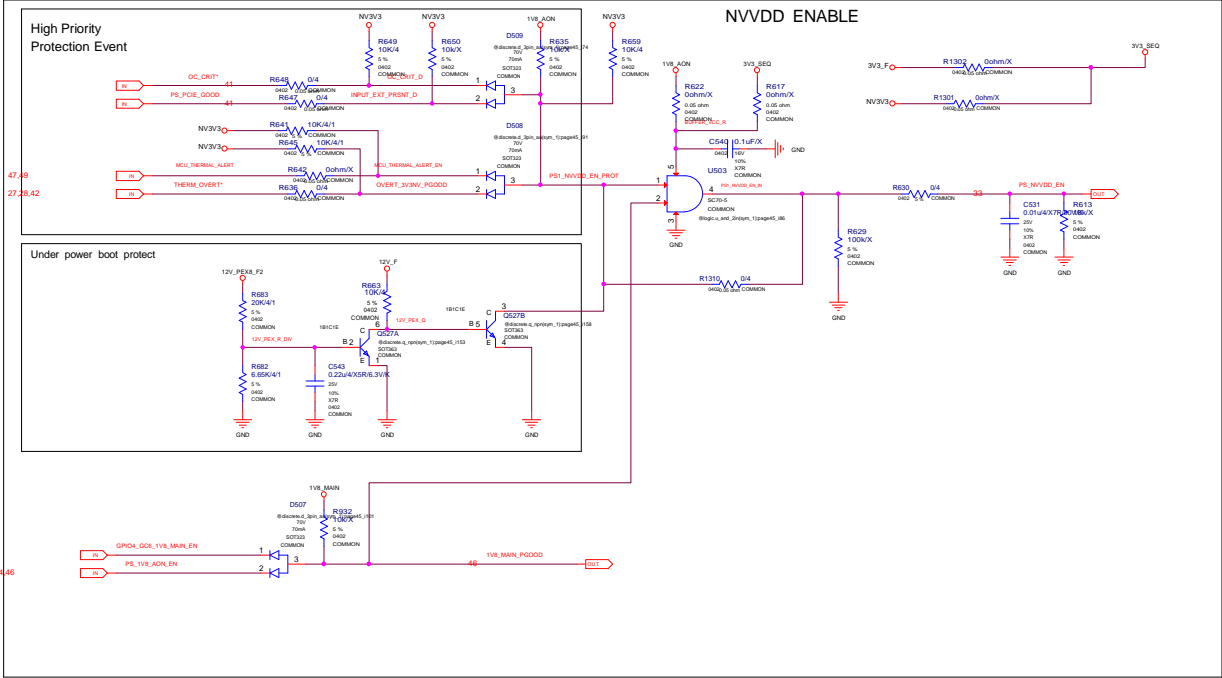
ALL NVIDIA DESIGN SPECIFICATIONS, REFERENCE SPECIFICATIONS, REFERENCE BOARDS, FILES, DRAWINGS, DIAGNOSTICS, LISTS AND OTHER DOCUMENTS OR INFORMATION (TOGETHER AND SEPARATELY, MATERIALS) ARE BEING PROVIDED "AS IS". THE MATERIALS MAY CONTAIN KNOWN AND UNKNOWN VIOLATIONS OR DEVIATIONS OF INDUSTRY STANDARDS AND SPECIFICATIONS. NVIDIA MAKES NO WARRANTIES, EXPRESSED, IMPLIED, STATUTORY OR OTHERWISE WITH RESPECT TO THE MATERIALS OR OTHERWISE, AND EXPRESSLY DISCLAIMS ALL IMPLIED WARRANTIES INCLUDING, WITHOUT LIMITATION, THE WARRANTIES OF DESIGN, OF NON-INFRINGEMENT, MERCHANTABILITY OR FITNESS FOR A PARTICULAR PURPOSE, OR ARISING FROM A COURSE OF DEALING, TRADE USAGE, TRADE PRACTICE, OR INDUSTRY STANDARDS.

ASSEMBLY	<ASSEMBLY DESCRIPTION>
PAGE: DETAIL	PS: Dynamic power balance logic









**GIGABYTE™**

**IFPE DP**

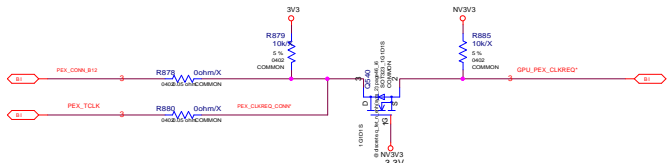
Size	Document Number	Rev
Common	GV-N108TAORUS-11GD	1.02
Date:	Wednesday, August 09, 2017	Sheet 43 of 47

NVIDIA CORPORATION			
2701 SAN TOMAS EXPRESSWAY			
SANTA CLARA, CA 95050, USA			
NV_PN	600-1G611-BASE-000		
PCB REV	PG611-A00	PAGE	43 OF 48
SCM REV	A	DATE	09-MAR-2016

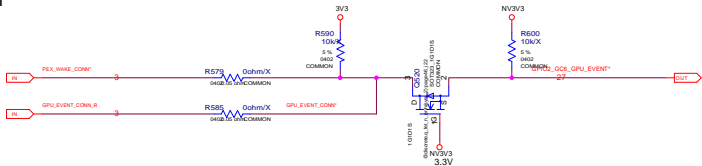
ALL NVIDIA DESIGN SPECIFICATIONS, REFERENCE SPECIFICATIONS, REFERENCE BOARDS, FILES, DRAWINGS, DIAGNOSTICS, LISTS AND OTHER DOCUMENTS OR INFORMATION (TOGETHER AND SEPARATELY, "MATERIALS") ARE BEING PROVIDED "AS IS". THE MATERIALS MAY CONTAIN KNOWN AND UNKNOWN VIOLATIONS OR DEVIATIONS OF INDUSTRY STANDARDS AND SPECIFICATIONS. NVIDIA MAKES NO WARRANTIES, EXPRESSED, IMPLIED, STATUTORY OR OTHERWISE WITH RESPECT TO THE MATERIALS OR OTHERWISE, AND EXPRESSLY DISCLAIMS ALL IMPLIED WARRANTIES INCLUDING, WITHOUT LIMITATION, THE WARRANTIES OF DESIGN, OF NONINFRINGEMENT, MERCHANTABILITY OR FITNESS FOR A PARTICULAR PURPOSE, OR ARISING FROM A COURSE OF DEALING, TRADE USAGE, TRADE PRACTICE, OR INDUSTRY STANDARDS.

ASSEMBLY	«ASSEMBLY DESCRIPTION»
PAGE: DETAIL	PS: NVVDD ENABLE

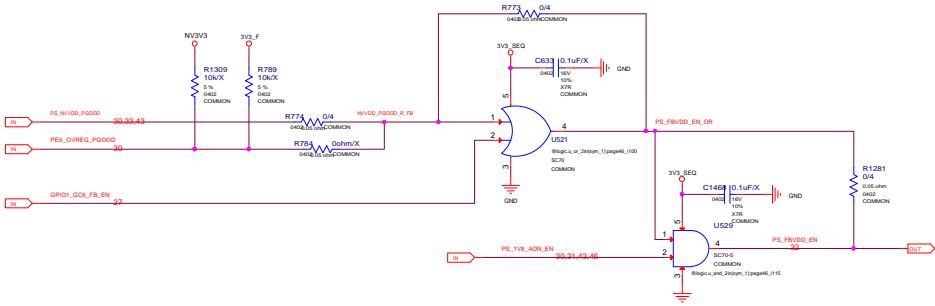
## PEX\_CLKREQ\*



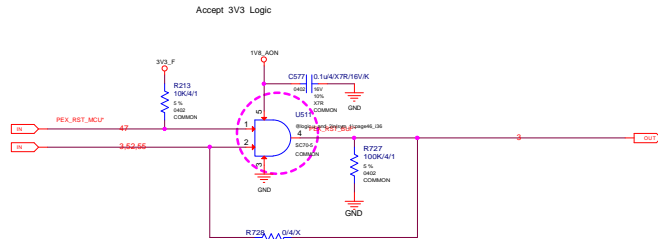
## GPU\_EVENT\*



FBVDD/Q ENABLE

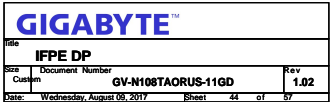


## PEX\_RST# LOGIC



ASSEMBLY		<ASSEMBLY_DESCRIPTION>		SANTA CLARA, CA 95050, USA	
PAGE: DETAIL		PG: G08 MISC		600-1G611-BASE-000	
CLAMS ALL					
STANDARDS					
		PCB REV		P0611-X00	
		BOM REV		A	
				PAGE	
				44 OF 49	
				DATE	
				09-MAR-2016	

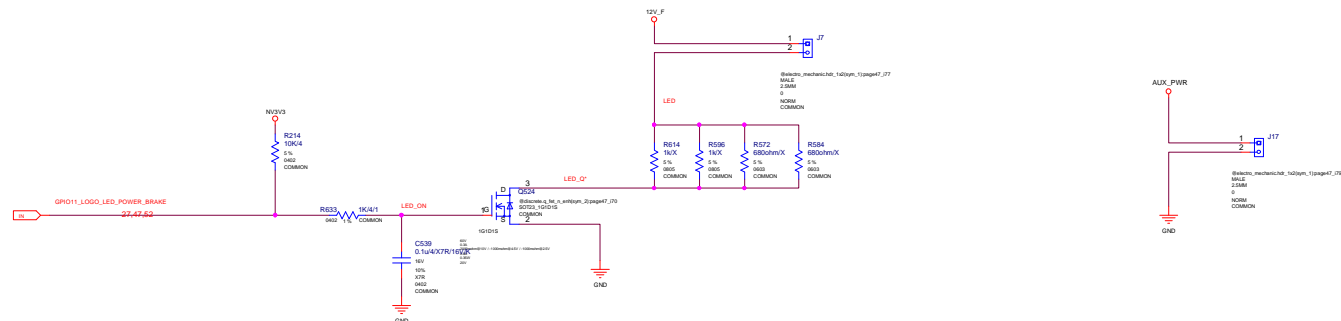
ALL NVIDIA DESIGN SPECIFICATIONS, REFERENCE SPECIFICATIONS, REFERENCE BOARDS, FILES, DRAWINGS, DIAGNOSTICS, LISTS AND OTHER DOCUMENTS (TOGETHER AND SEPARATELY "MATERIALS") ARE BEING PROVIDED AS IS. THE MATERIALS MAY CONTAIN KNOWN AND UNKNOWN VIOLATIONS OR DEVIATIONS OF INDUSTRY STANDARDS AND SPECIFICATIONS. NVIDIA MAKES NO WARRANTIES, EXPRESSED, IMPLIED, STATUTORY OR OTHERWISE WITH RESPECT TO THE MATERIALS OR OTHERWISE, AND EXPRESSLY DISCLAIMS ALL IMPLIED WARRANTIES INCLUDING, WITHOUT LIMITATION, THE WARRANTIES OF DESIGN, OF NONINFRINGEMENT, MERCHANTABILITY OR FITNESS FOR A PARTICULAR PURPOSE, OR ARISING FROM A COURSE OF DEALING, TRADE USAGE, TRADE PRACTICE, OR INDUSTRY STANDARDS.



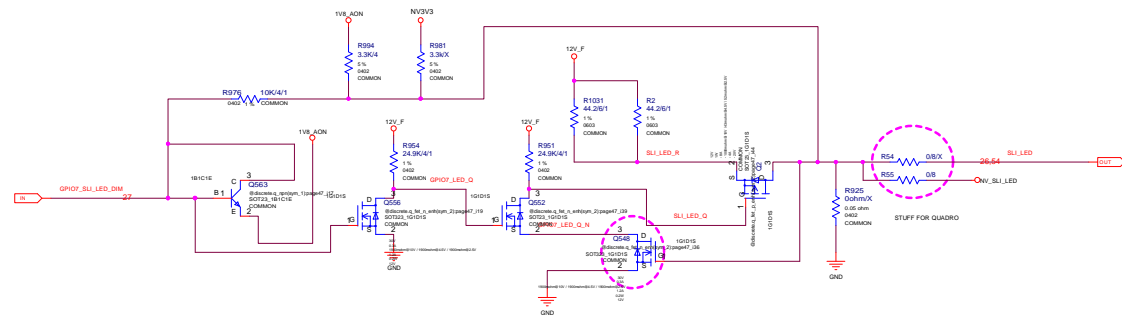
**NVIDIA CORPORATION**  
2701 SAN TOMAS EXPRESSWAY  
SANTA CLARA, CA 95050, USA



LED HEADER(GEFORCE ONLY)



## SLI LED (GEFORCE ONLY)



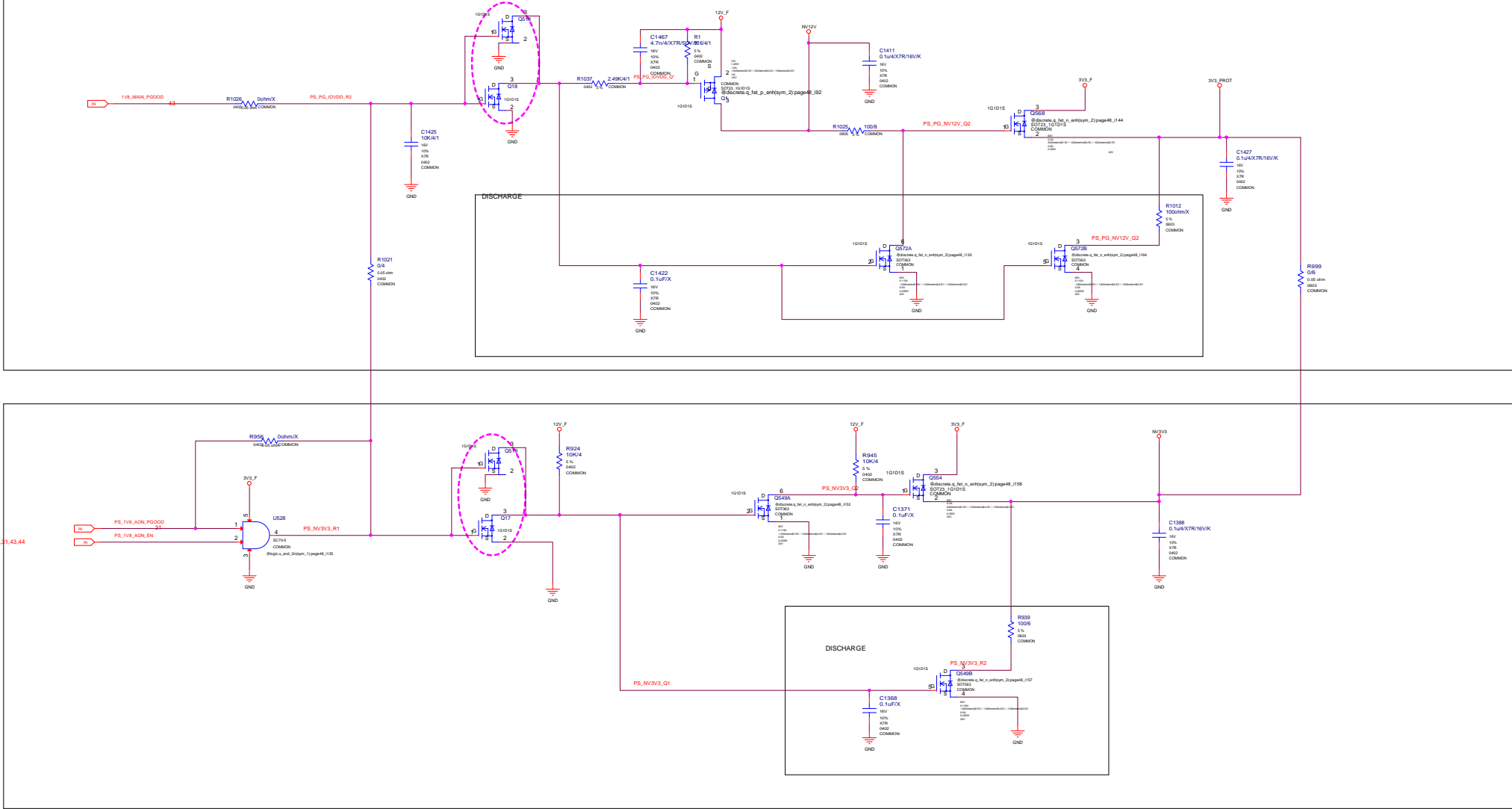
<b>IFPE DP</b>					
Size Custom	Document Number <b>GV-N108TAORUS-11GD</b>				Rev <b>1.02</b>
Date:	Wednesday, August 09, 2017		Sheet	45	of 57

**NVIDIA CORPORATION**  
2701 SAN TOMAS EXPRESSWAY  
SANTA CLARA, CA 95050, USA



NV_PN	600-1G611-BASE-000		
PCB REV	PG611-A00	PAGE	45 OF 49
BOM REV	A	DATE	09-MAR-2016

ALL NVIDIA DESIGN SPECIFICATIONS, REFERENCE SPECIFICATIONS, REFERENCE BOARDS, FILES, DRAWINGS, DIAGNOSTICS, LISTS AND OTHER DOCUMENTS OR INFORMATION (TOGETHER AND SEPARATELY, "MATERIALS") ARE BEING PROVIDED "AS IS". THE MATERIALS MAY CONTAIN KNOWN AND UNKNOWN VIOLATIONS OR DEVIATIONS OF INDUSTRY STANDARDS AND SPECIFICATIONS. NVIDIA MAKES NO WARRANTIES, EXPRESSED, IMPLIED, STATUTORY OR OTHERWISE WITH RESPECT TO THE MATERIALS OR OTHERWISE, AND EXPRESSLY DISCLAIMS ALL IMPLIED WARRANTIES INCLUDING, WITHOUT LIMITATION, THE WARRANTIES OF DESIGN, OF NON-INFRINGEMENT, MERCHANTABILITY OR FITNESS FOR A PARTICULAR PURPOSE, OR ARISING FROM A COURSE OF DEALING, TRADE USAGE, TRADE PRACTICE, OR INDUSTRY STANDARDS.



GIGABYTE™

File

IFPE DP

Doc

Document Number

GV-N108TAORUS-11GD

Rev

1.02

Chg

Date

Wednesday, August 08, 2017

Sheet

46

of

57

NVIDIA CORPORATION

2701 SAN TOMAS EXPRESSWAY

SANTA CLARA, CA 95050, USA

NV\_PN

600-1G611-BASE-000

PCB REV

PG611-A00

SCM REV

A

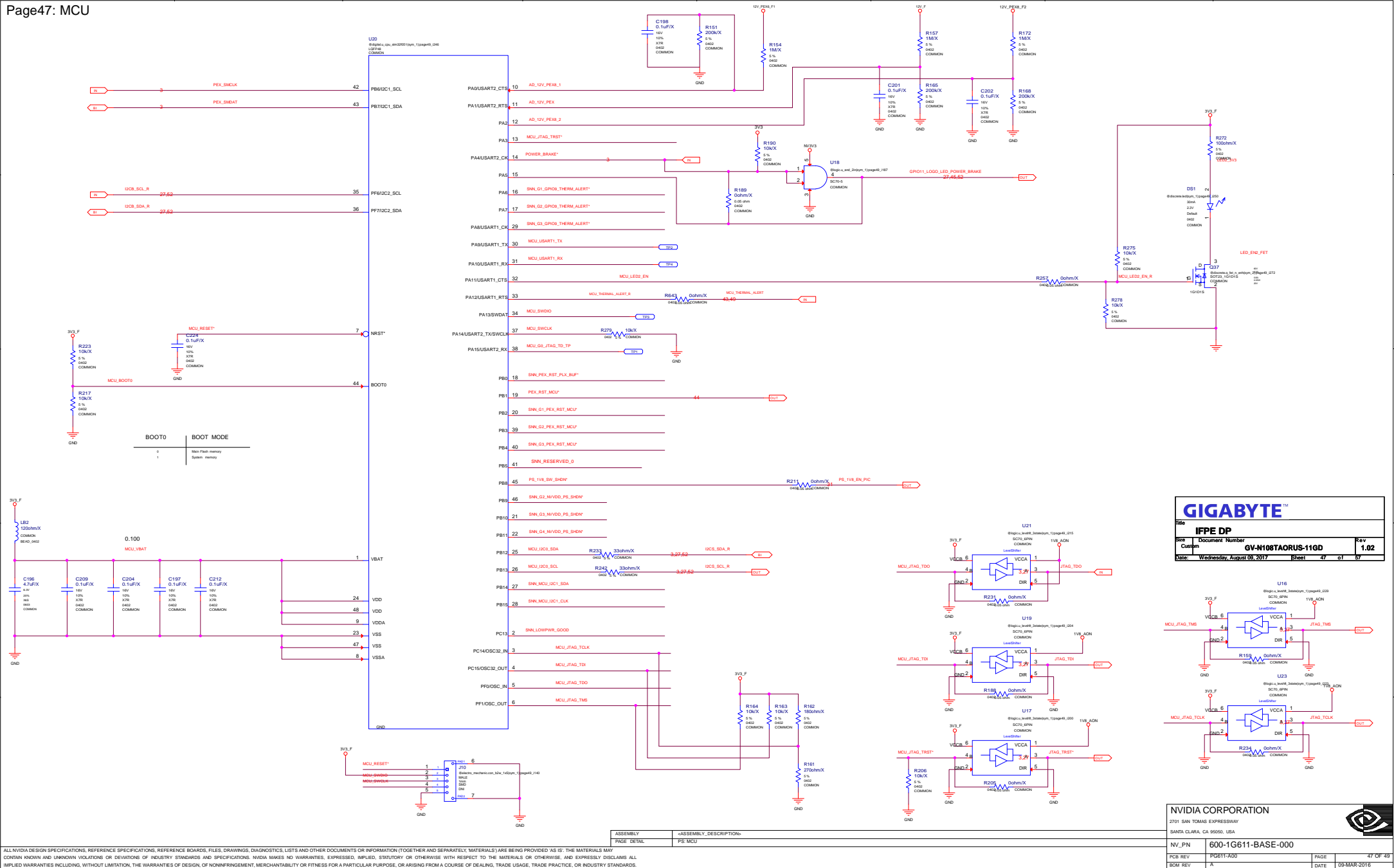
PAGE

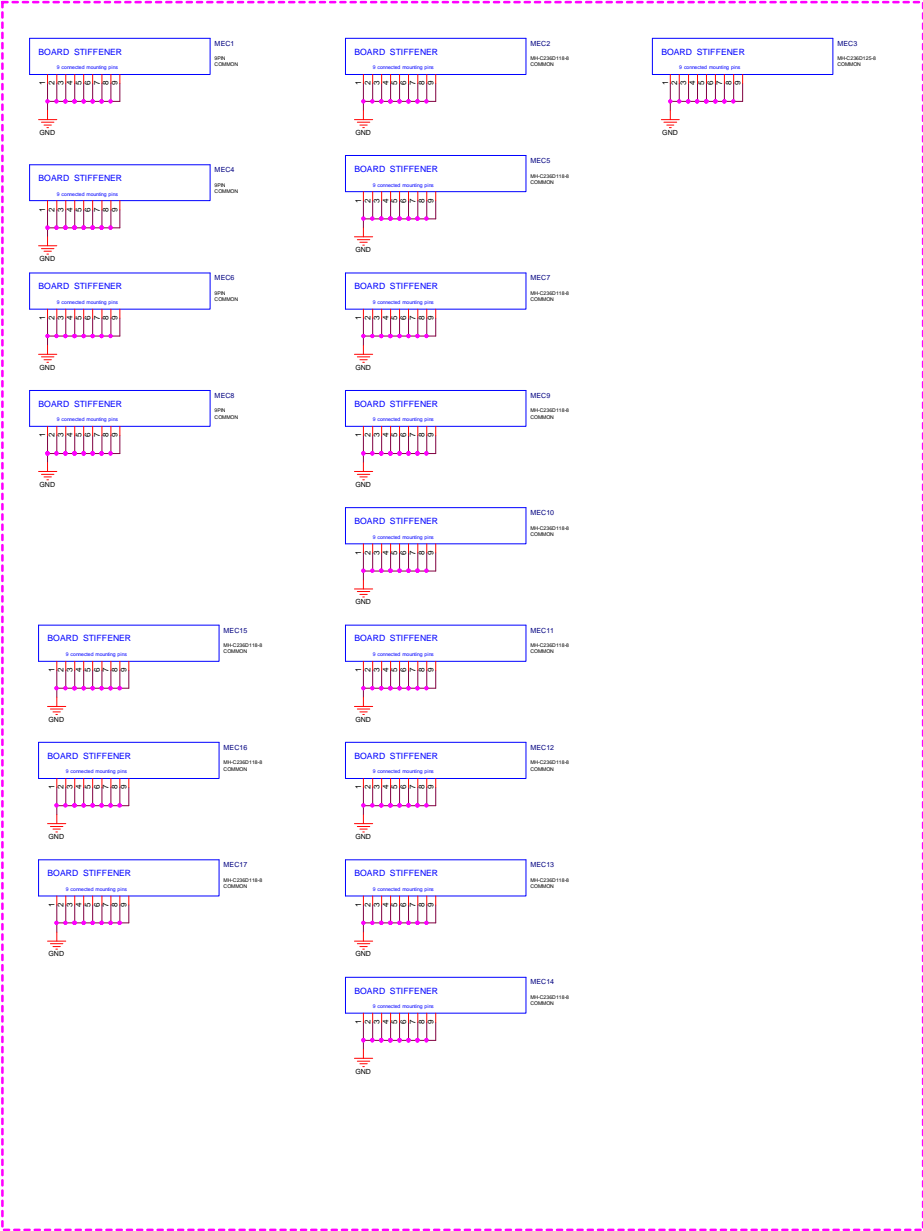
36 OF 49

DATE

09-MAR-2018

ALL NVIDIA DESIGN SPECIFICATIONS, REFERENCE SPECIFICATIONS, REFERENCE BOARDS, FILES, DRAWINGS, DIAGNOSTICS, LISTS AND OTHER DOCUMENTS (TOGETHER AND SEPARATELY, MATERIALS) ARE BEING PROVIDED "AS IS". THE MATERIALS MAY CONTAIN KNOWN AND UNKNOWN VIOLATIONS OR DEVIATIONS OF INDUSTRY STANDARDS AND SPECIFICATIONS. NVIDIA MAKES NO WARRANTIES, EXPRESSED, IMPLIED, STATUTORY OR OTHERWISE, WITH RESPECT TO THE MATERIALS AND EXPRESSLY DISCLAIMS ALL IMPLIED WARRANTIES INCLUDING, WITHOUT LIMITATION, THE WARRANTIES OF DESIGN, OF NONINFRINGEMENT, MERCHANTABILITY OR FITNESS FOR A PARTICULAR PURPOSE, OR ARISING FROM A COURSE OF DEALING, TRADE USAGE, TRADE PRACTICE, OR INDUSTRY STANDARDS.





IFPE DP

Doc	Document Number	Rev
Rev	GV-H108TAORUS-11GD	1.02
Date	Wednesday, August 09, 2017	Sheet 48 of 57

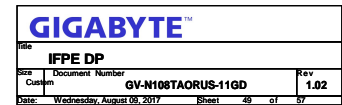
NVIDIA CORPORATION

2701 SAN TOMAS EXPRESSWAY  
SANTA CLARA, CA 95050, USA

NV_P/N	600-1G611-BASE-000	PAGE	48 OF 49
PCB REV	PG611-A00	DATE	09-MAR-2016
SCM REV	A		

ALL NVIDIA DESIGN SPECIFICATIONS, REFERENCE BOARDS, FILES, DRAWINGS, DIAGNOSTICS, LISTS AND OTHER DOCUMENTS OR INFORMATION (TOGETHER AND SEPARATELY, MATERIALS) ARE BEING PROVIDED AS IS. THE MATERIALS MAY CONTAIN KNOWN AND UNKNOWN VIOLATIONS OR DEVIATIONS OF INDUSTRY STANDARDS AND SPECIFICATIONS. NVIDIA MAKES NO WARRANTIES, EXPRESSED, IMPLIED, STATUTORY OR OTHERWISE WITH RESPECT TO THE MATERIALS OR OTHERWISE, AND EXPRESSLY DISCLAIMS ALL IMPLIED WARRANTIES INCLUDING, WITHOUT LIMITATION, THE WARRANTIES OF DESIGN, OF NONINFRINGEMENT, MERCHANTABILITY OR FITNESS FOR A PARTICULAR PURPOSE, OR ARISING FROM A COURSE OF DEALING, TRADE USAGE, TRADE PRACTICE, OR INDUSTRY STANDARDS.

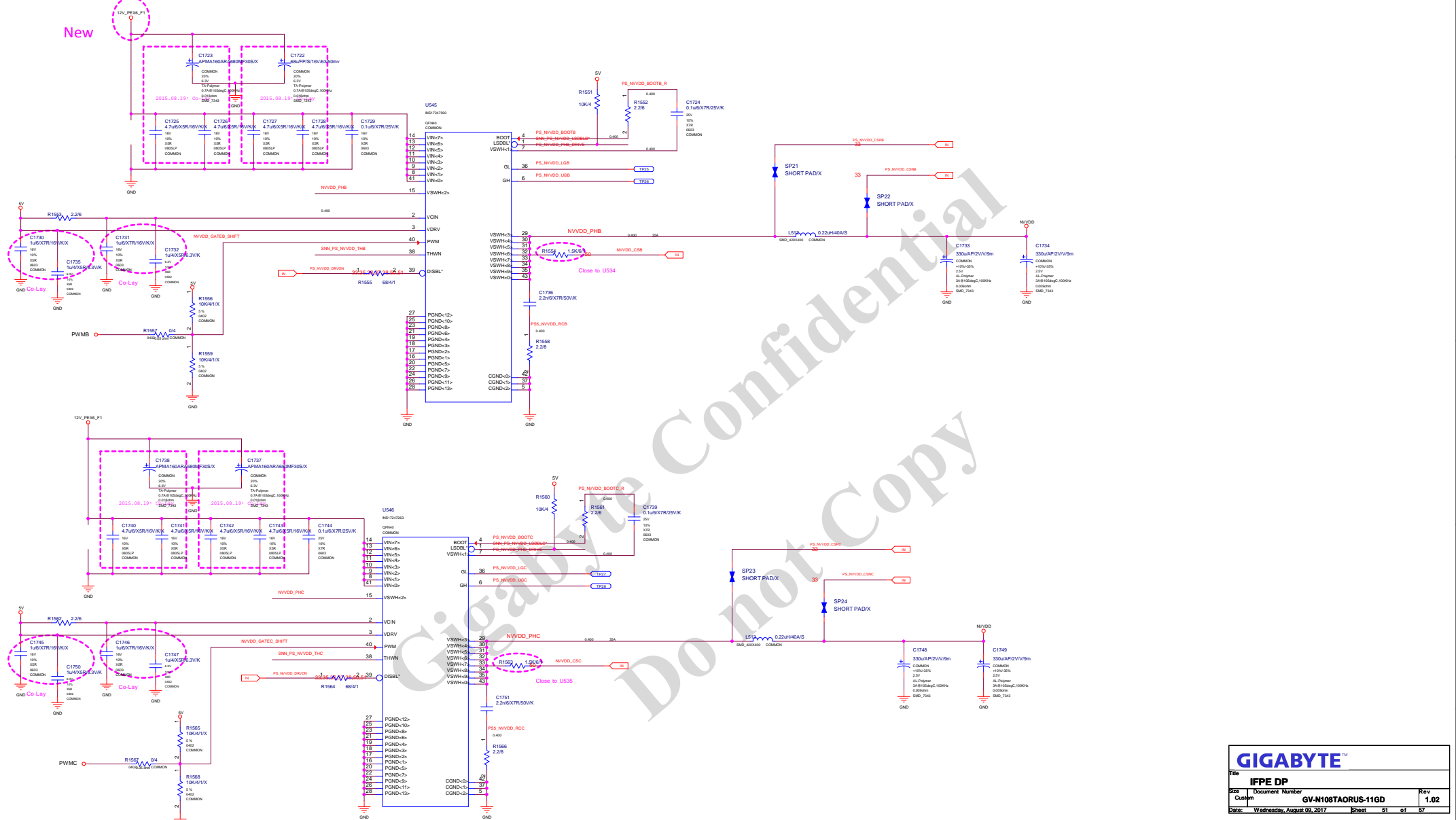




NV_PN	600-1G611-BASE-000		
PCB REV	PG611-A00	PAGE	49 OF 49
BOM REV	A	DATE	09-MAR-2016

ASSEMBLY	ASSEMBLY_DESCRIPTION
PAGE DETAIL	VR Thermal Protection

ALL NVIDIA DESIGN SPECIFICATIONS, REFERENCE SPECIFICATIONS, REFERENCE BOARDS, FILES, DRAWINGS, DIAGNOSTICS, LISTS AND OTHER DOCUMENTS OR INFORMATION (TOGETHER AND SEPARATELY, MATERIALS) ARE BEING PROVIDED 'AS IS'. THE MATERIALS MAY CONTAIN KNOWN AND UNKNOWN VIOLATIONS OR DEVIATIONS OF INDUSTRY STANDARDS AND SPECIFICATIONS. NVIDIA MAKES NO WARRANTIES, EXPRESSED, IMPLIED, STATUTORY OR OTHERWISE WITH RESPECT TO THE MATERIALS OR OTHERWISE, AND EXPRESSLY DISCLAIMS ALL IMPLIED WARRANTIES INCLUDING, WITHOUT LIMITATION, THE WARRANTIES OF DESIGN, OF NONINFRINGEMENT, MERCHANTABILITY OR FITNESS FOR A PARTICULAR PURPOSE, OR ARISING FROM A COURSE OF DEALING, TRADE USAGE, TRADE PRACTICE, OR INDUSTRY STANDARDS.



CO-LAYOUT: CHOOSE UA OR UB

ASSEMBLY	BASE LEVEL GENERIC SCHEMATIC ONLY
PAGE DETAIL	PS: NVDD Dynamic Switch Phases

ALL NVIDIA DESIGN SPECIFICATIONS, REFERENCE SPECIFICATIONS, REFERENCE BOARDS, FILES, DRAWINGS, DIAGNOSTICS, LISTS AND OTHER DOCUMENTS OR INFORMATION (TOGETHER AND SEPARATELY, "MATERIALS") ARE BEING PROVIDED "AS IS." THE MATERIALS MAY CONTAIN KNOWN AND UNKNOWN VULNERABILITIES OR DEVIATIONS OF NVIDIA STANDARDS AND SPECIFICATIONS. NVIDIA MAKES NO WARRANTIES, EXPRESSED, IMPLIED, STATUTORY OR OTHERWISE WITH REGARD TO THE MATERIALS OR OTHERWISE, AND EXPRESSLY DISCLAIMS ALL IMPLIED WARRANTIES INCLUDING, WITHOUT LIMITATION, THE WARRANTIES OF DESIGN, OF NON-INFRINGEMENT, MERCHANTABILITY OR FITNESS FOR A PARTICULAR PURPOSE, OR ARISING FROM A COURSE OF DEALING, TRADE USAGE, TRADE PRACTICE, OR INDUSTRY STANDARDS.

<b>GIGABYTE™</b>				
Title				
<b>IFPE DP</b>				
Size	Document Number			Rev
Custom	<b>GV-N108TAORUS-11GD</b>			<b>1.02</b>
Date:	Wednesday, August 09, 2017	Sheet	51 of	57

NVIDIA CORPORATION

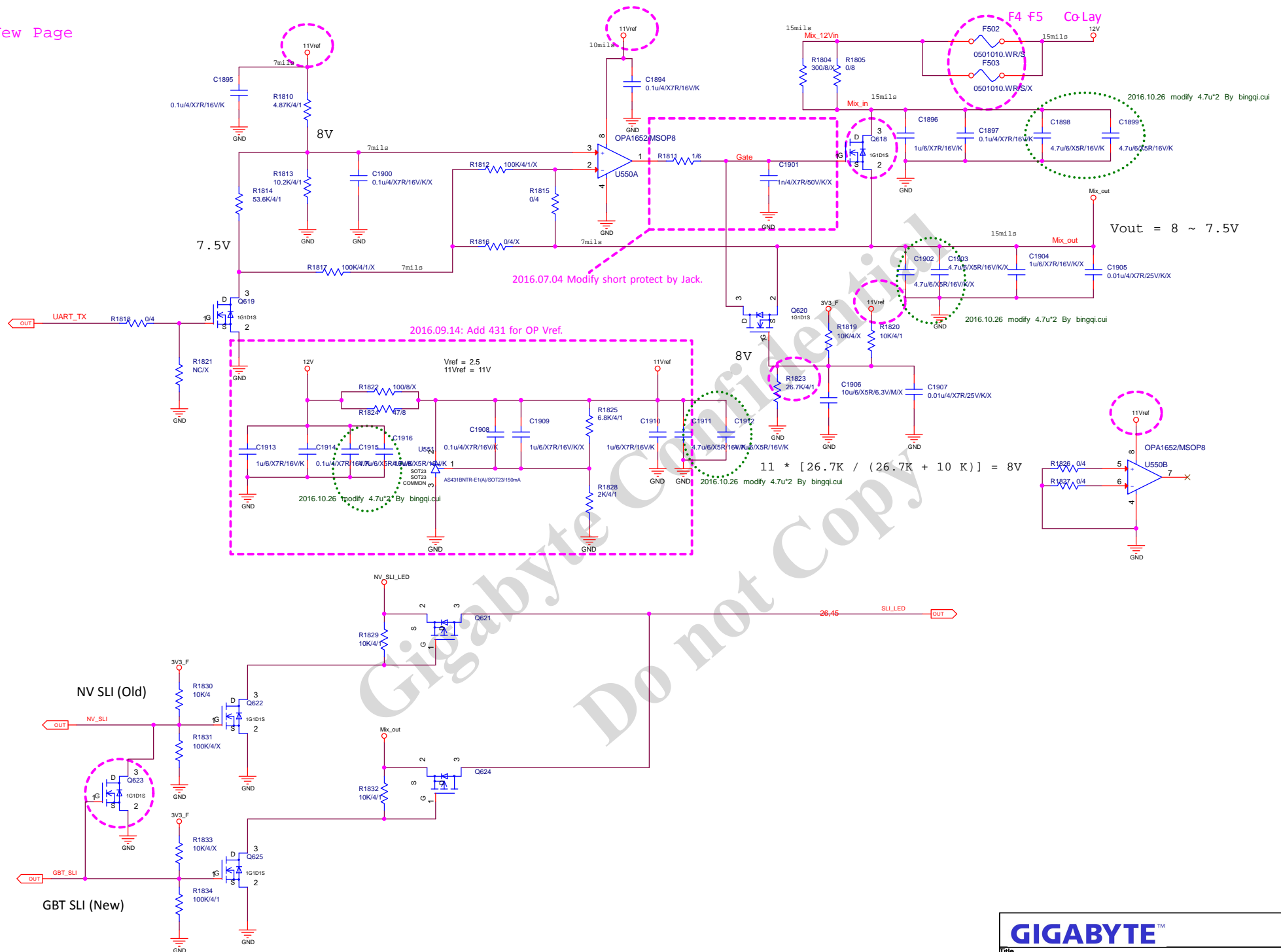


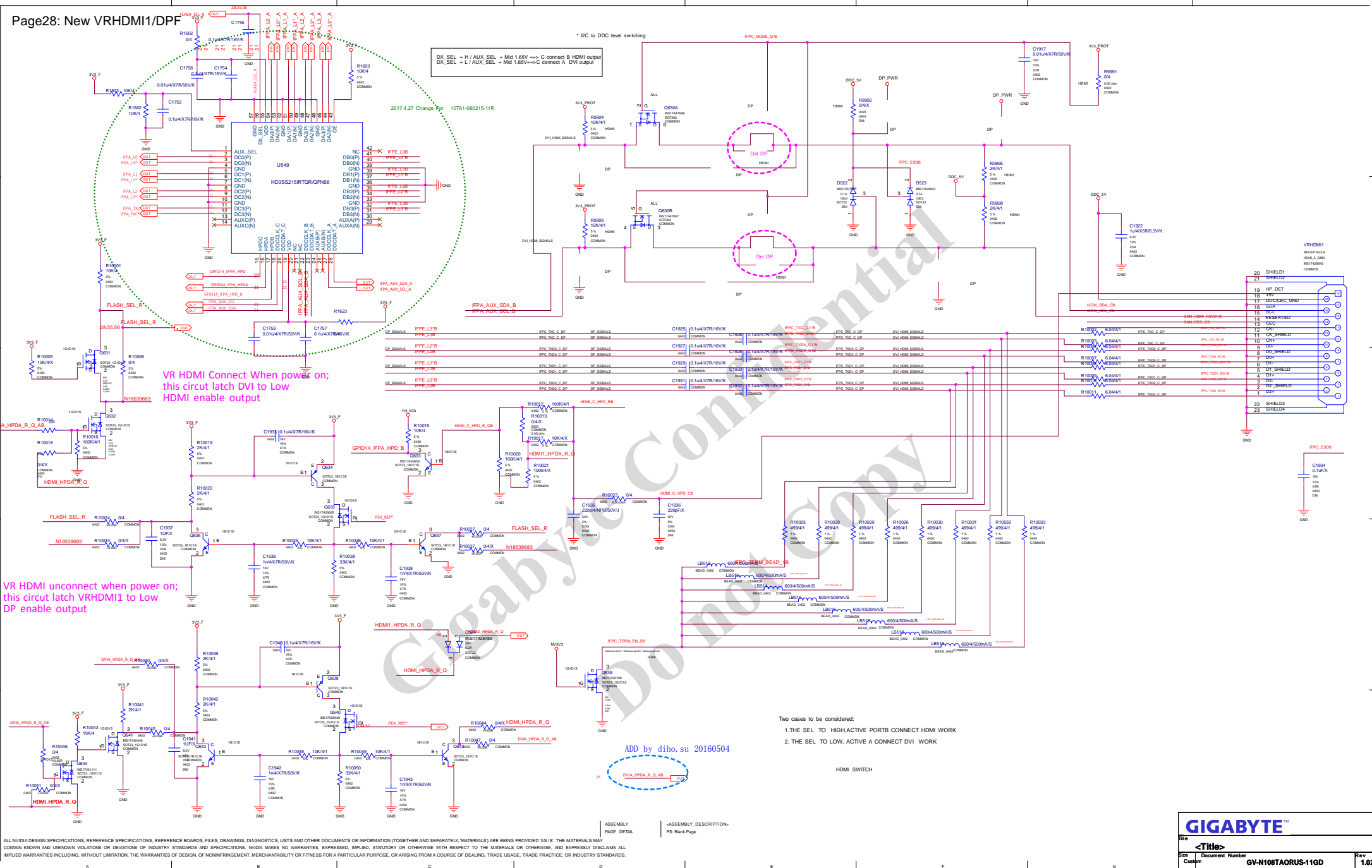
NV_PN	600-1G600-BASE-QS1
-------	--------------------

PCB REV	PG600-B02	PAGE	35 OF 45
BCM REV	A	DATE	21-APR-2015

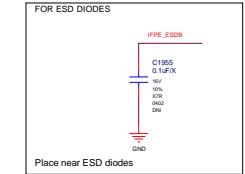
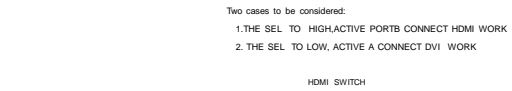









ALL NVIDIA DESIGN SPECIFICATIONS, REFERENCE SPECIFICATIONS, REFERENCE BOARDS, FILES, DRAWINGS, DIAGNOSTICS, LISTS AND OTHER DOCUMENTS (TOGETHER AND SEPARATELY, "MATERIALS") ARE BEING PROVIDED AS IS. THE MATERIALS MAY CONTAIN KNOWN AND UNKNOWN ERRORS OR OMISSIONS OR INACCURACIES. NVIDIA MAKES NO WARRANTIES, EXPRESSED, IMPLIED, STATUTORY OR OTHERWISE, WITH RESPECT TO THE MATERIALS OR OTHERWISE. EXPRESSLY DISCLAIM ALL IMPLIED WARRANTIES INCLUDING, WITHOUT LIMITATION, THE WARRANTIES OF DESIGN, NON-INFRINGEMENT, MERCHANTABILITY OR FITNESS FOR A PARTICULAR PURPOSE, OR ARISING FROM A COURSE OF DEALING, TRADE USAGE, PRACTICE, OR INDUSTRY STANDARDS.



			
Title			
<Title>			
Size	Document Number	Rev	
Custom	GV-N108TAORUS-11GD	1.02	
Date	Wednesday, August 09, 2017	Sheet	56 of 57



History

Date	Modify
2017.03.01	First version
2017.04.27	Change I/O Switch For 10TA1-080215-11R

Gigabyte Confidential  
Do not Copy